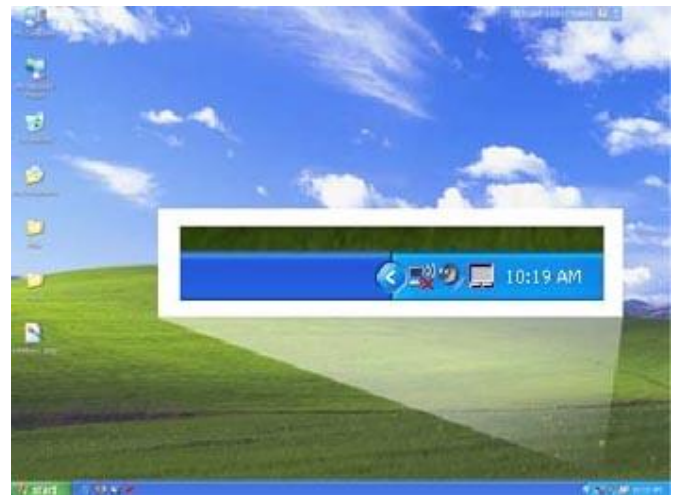


Introduction:

What you will need:

- **Wireless-enabled laptop:** This means that you must have a laptop with wireless capability built-in, or you must have an external wireless card. *NOTE:* You will need a wireless device that is 802.11b, 802.11g, or 802.11n compliant.
- **Wireless network name:** eGCC
- **Your eGCC Username and Password:** If you have forgotten your eGCC Username and Password, please contact the Helpdesk (623) 845-3555 x2 or 3 for assistance.

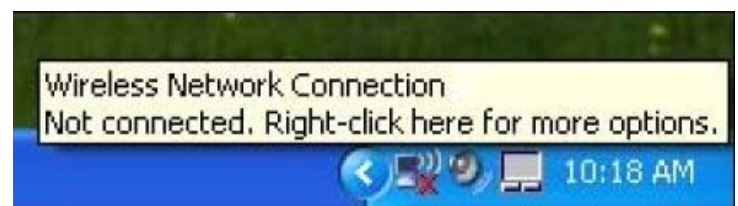
Note: This guide assumes that Windows XP, Service Pack 2 (SP2) is the operating system on your laptop. Some of these instructions may also work on laptops with Windows 98 as the operating system - of course, please [stop by](#) for assistance at any time!



Here's a screenshot of a Windows laptop running Windows XP, SP2. The magnified area in the center of the screenshot is where the Wireless icon is located. And, this is where we'll start.

Step 1: Locate the Wireless notification icon

Wireless notification icon: Picture of a computer with the three lines. If there is no network detected, a little red "x" will appear next to it.



Look in the right-hand corner of your laptop's screen, and look for the icon. If you put your mouse cursor over the icon, a message like the one shown here appears. Please double-click on the icon to proceed to Step 2.

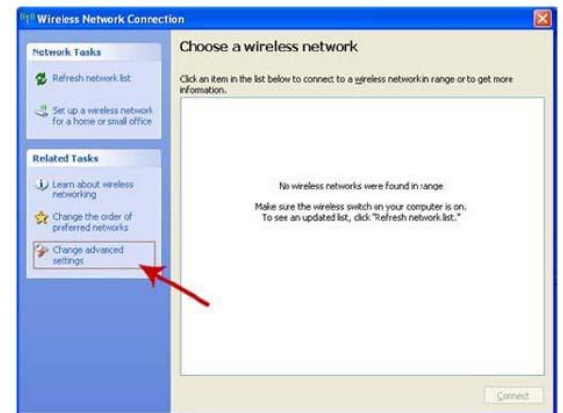
Now, if you do not see the icon, there are two possibilities:

1. **Your internal wireless card is not activated.** Please look at your laptop and look for a button with the symbol like the one on the right, or a little switch that has the symbol next to it. Ensure that the button is glowing (newer laptop models) or that the switch is set to the "on" position.
2. **Your external wireless card isn't plugged in correctly or your card needs to be enabled.** To enable it, usually you just need to go to the Start Menu, go to "Settings" and select "Open Network Connections". Then double-click on the icon for the Wireless card to enable it. If the card is disabled, the icon in the "Network Connections" window will be grayed out.



Step 2: Verify that "eGCC" network isn't detected

Now, when you clicked on the Wireless notification icon, a window like the one on the right should appear. If you don't see the "eGCC" network listed in the white box to the left, then please click on "Change advanced settings".



Step 3: Add the "eGCC" wireless network as a Preferred Network

Now, when you clicked "Change advanced settings" in Step 2, the window to the left should have appeared. And, the window in Step 2 should have disappeared.

At first, the window will open to the "General" tab. Please click on the "Wireless Networks" tab at the top. Then,



locate the "Preferred Networks" section in the bottom half of this window.

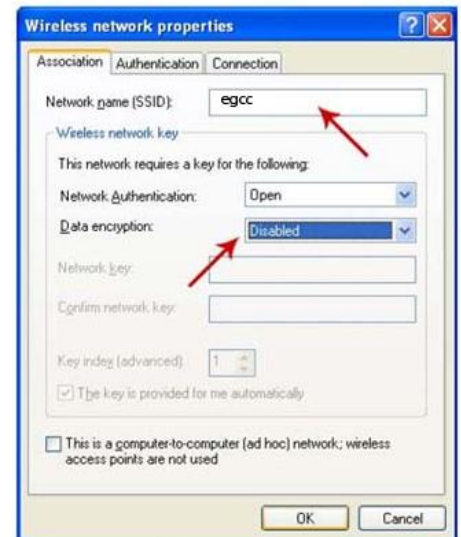
If you do not see "eGCC" listed, then please click the "Add..." button to add the "eGCC" network to your list.

If you do see "eGCC", chances are that the settings for it weren't configured properly. In this case, please click on "eGCC" once and then click the "Remove" button. Now, click the "Add..." button to add the "eGCC" network to your list.

Step 4: Configure settings for "eGCC" network

When you click the "Add..." button in Step 3, the window to the right should appear. Here, we're going to enter in the information needed to set up our wireless connection to "eGCC".

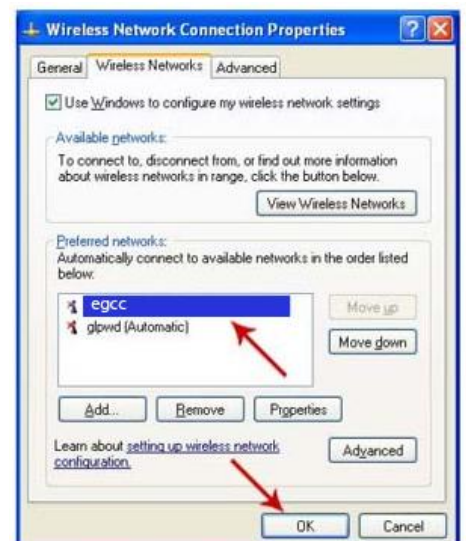
1. In the "Network name (SSID)" text box, please type **eGCC**
2. In the "Data encryption" drop-down box, please select the **Disabled** option.
3. Once you ensure that the window on your computer looks the same as the one on the right (without the arrows), please click on the "OK" button to save your configuration settings for "eGCC".



Step 5: Apply the changes you just made

You should now see the window we started with in Step 3. This time, you should see "eGCC" listed in the "Preferred Networks" section in the bottom half of this window.

Under normal circumstances, there should not be any other things to configure. Go ahead and click the "OK"



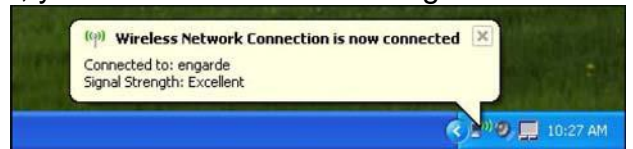
button to apply the changes you just made. This will close the window.

Step 6: Connect to the eGCC network

Once you click the "OK" button, the Wireless notification icon should look like the icon to the right. This indicates that a network was found and that a connection is in the process of being established.



Assuming all is well and all steps were followed, you should see the following upon successful connection! Of course, the signal strength will depend on where you are on campus.



Step 7: Logon to the eGCC network! Launch you favorite web browser and log in using your eGCC username and password.