

National Community College Benchmark Project (NCCBP) Trends

click on the title to be taken to that section of the report

- Proportions of Students That Completed a Degree or Certificate or Transferred within Three Years
- Student Performance at Transfer Institutions
- Credit Students Who Enrolled Next Term and Next Fall
- Student Goal Attainment
- Credit, College-level Course Retention and Success Rates
- Credit Developmental/ Remedial Course Retention and Success Rates
- Credit Developmental/ Remedial Student Retention and Success in First College-level Courses
- Retention and Success in Core Academic Skill Areas
- Institution-wide Credit Grades
- Minority Participation Rates
- High School Graduates Enrolling at Institution
- Market Penetration
- Average Credit Section Size
- Credit Course Student/Faculty Ratio
- Instructional Faculty Load
- Distance Learning
- Student/Professional Student Services Staff Ratio
- Retirements and Departures
- Cost per Credit Hour and FTE Student

The National Community College Benchmark Project provides community colleges with opportunities to report outcome and effectiveness data in critical performance areas, receive reports of benchmarks, and compare results with those of other colleges.

Community colleges are under increasing pressures to demonstrate effectiveness to federal, state, and accrediting agencies. Demonstrations increasingly require comparisons with others on effectiveness and outcome measures.

Until recently, no community college benchmarking consortia have been readily available. The National Community College Benchmark Project satisfies that need.

Responding to requirements for inter-institutional comparisons, Johnson County Community College worked with other colleges from across the United States to develop a community college benchmark reporting process.

Benchmarks and reporting processes were defined, pilot tested, and revised in 2003. The current data-collection and reporting process was implemented in 2004. 280 community colleges from across the United States participated in NCCBP in 2011.

more information at <http://www.nccbp.org>

A comprehensive list of participating institutions can be found on the NCCBP website here.

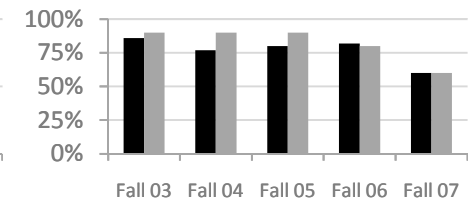
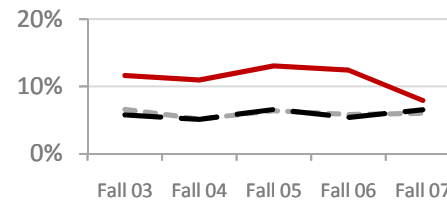
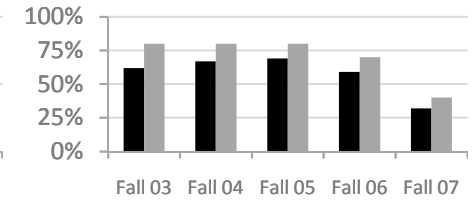
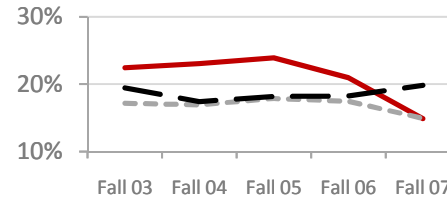
National Community College Benchmark Project (NCCBP) Trends

Proportions of Students That Completed a Degree or Certificate or Transferred within Three Years (IPEDS GRS Cohort)

% Completed in Three Years

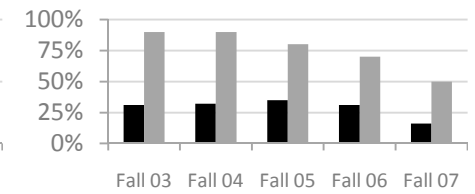
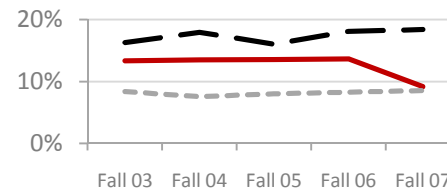
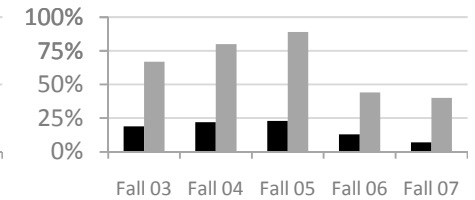
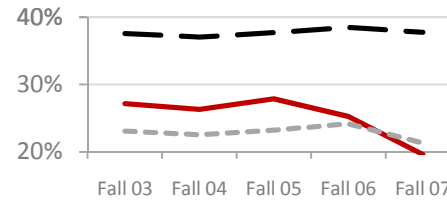
	Fall 03	Fall 04	Fall 05	Fall 06	Fall 07
Full-time					
GCC	22%	23%	24%	21%	15%
MCCD	17%	17%	18%	17%	15%
National Median	19%	17%	18%	18%	20%
GCC National Rank	62%	67%	69%	59%	32%
GCC District Rank	80%	80%	80%	70%	40%
Part-time					
GCC	12%	11%	13%	12%	8%
MCCD	7%	5%	6%	6%	6%
National Median	6%	5%	7%	5%	7%
GCC National Rank	86%	77%	80%	82%	60%
GCC District Rank	90%	90%	90%	80%	60%

— GCC - - - - MCCD - - - - National ■ National Rank ■ District Rank



% Completed or Transferred in Three Years

	Fall 03	Fall 04	Fall 05	Fall 06	Fall 07
Full-time					
GCC	27%	26%	28%	25%	20%
MCCD	23%	23%	23%	24%	21%
National Median	38%	37%	38%	38%	38%
GCC National Rank	19%	22%	23%	13%	7%
GCC District Rank	67%	80%	89%	44%	40%
Part-time					
GCC	13%	13%	14%	14%	9%
MCCD	8%	8%	8%	8%	9%
National Median	16%	18%	16%	18%	18%
GCC National Rank	31%	32%	35%	31%	16%
GCC District Rank	90%	90%	80%	70%	50%



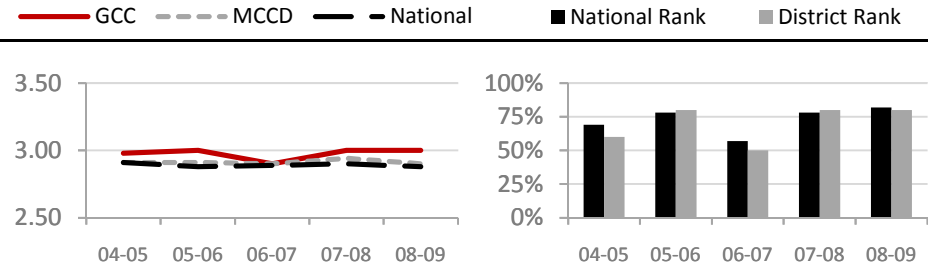
Rankings are the percent of benchmark participants with a value below GCC's value
Those in the top 15 and bottom 15 percentiles are highlighted

National Community College Benchmark Project (NCCBP) Trends

Student Performance at Transfer Institutions

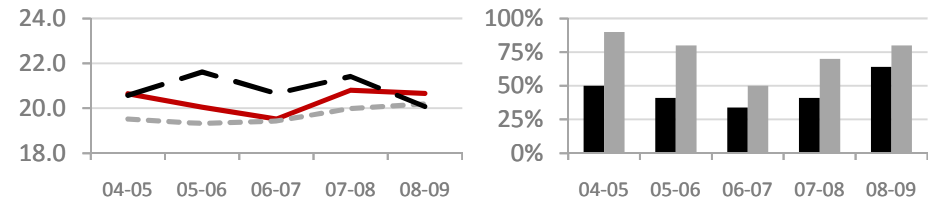
Cumulative First-year GPA < KSI

	04-05	05-06	06-07	07-08	08-09
GCC	2.98	3.00	2.90	3.00	3.00
MCCD	2.91	2.91	2.90	2.94	2.90
National Median	2.91	2.88	2.89	2.90	2.88
GCC National Rank	69%	78%	57%	78%	82%
GCC District Rank	60%	80%	50%	80%	80%



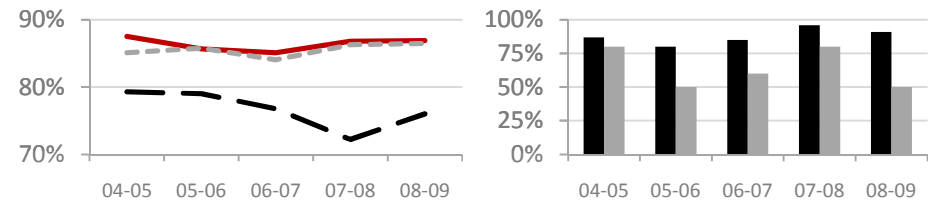
Average First-year Credit Hours

	04-05	05-06	06-07	07-08	08-09
GCC	20.7	20.1	19.5	20.8	20.7
MCCD	19.5	19.3	19.4	20.0	20.2
National Median	20.6	21.6	20.7	21.4	20.1
GCC National Rank	50%	41%	34%	41%	64%
GCC District Rank	90%	80%	50%	70%	80%



Percent Enrolled Next Year < KSI

	04-05	05-06	06-07	07-08	08-09
GCC	88%	86%	85%	87%	87%
MCCD	85%	86%	84%	86%	86%
National Median	79%	79%	77%	72%	76%
GCC National Rank	87%	80%	85%	96%	91%
GCC District Rank	80%	50%	60%	80%	50%



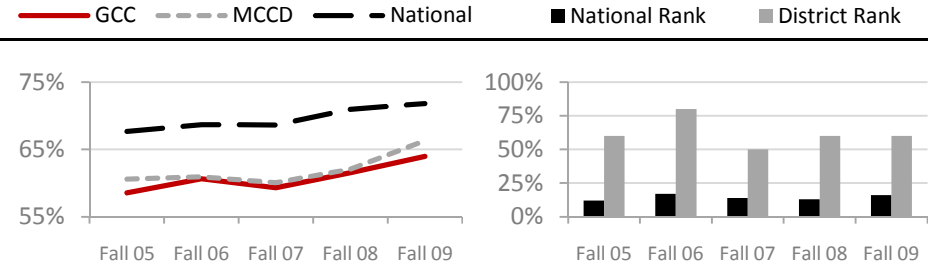
National Community College Benchmark Project (NCCBP) Trends

Credit Students Who Enrolled

Next Term and Next Fall

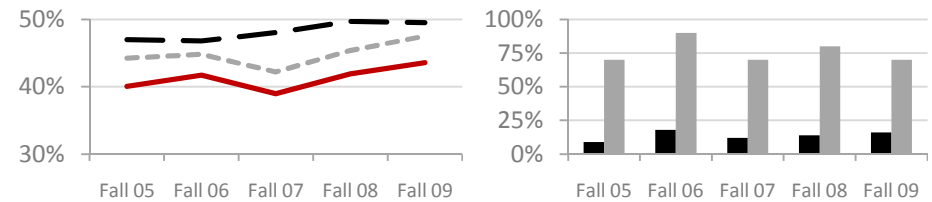
Next-term Persistence Rate < KSI

	Fall 05	Fall 06	Fall 07	Fall 08	Fall 09
GCC	59%	61%	59%	62%	64%
MCCD	61%	61%	60%	62%	66%
National Median	68%	69%	69%	71%	72%
GCC National Rank	12%	17%	14%	13%	16%
GCC District Rank	60%	80%	50%	60%	60%



Fall-fall Persistence Rate < KSI

	Fall 05	Fall 06	Fall 07	Fall 08	Fall 09
GCC	40%	42%	39%	42%	44%
MCCD	44%	45%	42%	45%	48%
National Median	47%	47%	48%	50%	50%
GCC National Rank	9%	18%	12%	14%	16%
GCC District Rank	70%	90%	70%	80%	70%



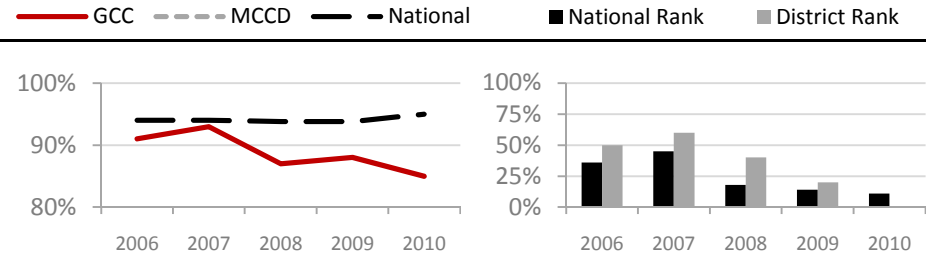
Rankings are the percent of benchmark participants with a value below GCC's value
Those in the top 15 and bottom 15 percentiles are highlighted

National Community College Benchmark Project (NCCBP) Trends

Student Goal Attainment

% Graduates and Completers ← KSI

	2006	2007	2008	2009	2010
GCC	91%	93%	87%	88%	85%
MCCD	n/a	n/a	n/a	n/a	n/a
National Median	94%	94%	94%	94%	95%
GCC National Rank	36%	45%	18%	14%	11%
GCC District Rank	50%	60%	40%	20%	0%

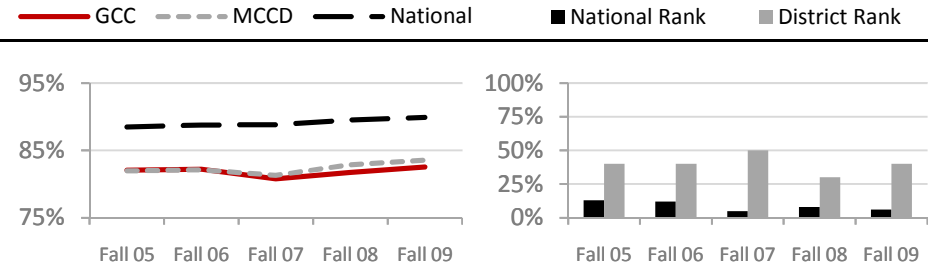


National Community College Benchmark Project (NCCBP) Trends

Credit, College-level Course Retention and Success Rates

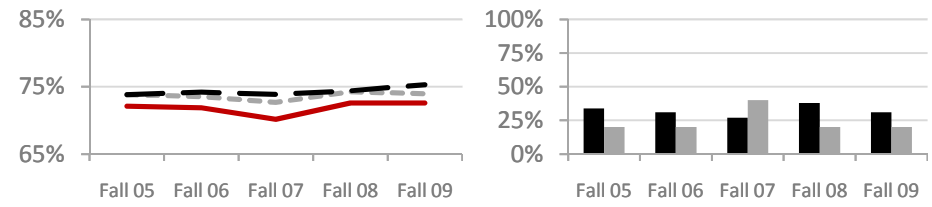
Retention Rate < KSI

	Fall 05	Fall 06	Fall 07	Fall 08	Fall 09
GCC	82%	82%	81%	82%	83%
MCCD	82%	82%	81%	83%	84%
National Median	88%	89%	89%	90%	90%
GCC National Rank	13%	12%	5%	8%	6%
GCC District Rank	40%	40%	50%	30%	40%



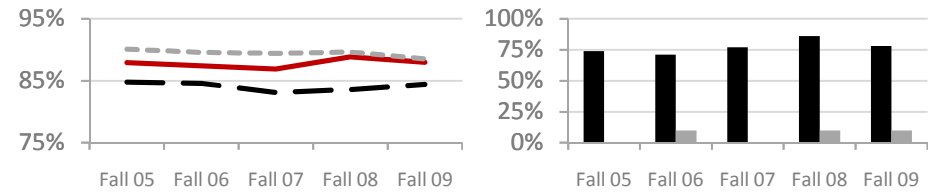
Enrollee Success Rate

	Fall 05	Fall 06	Fall 07	Fall 08	Fall 09
GCC	72%	72%	70%	73%	73%
MCCD	74%	74%	73%	74%	74%
National Median	74%	74%	74%	74%	75%
GCC National Rank	34%	31%	27%	38%	31%
GCC District Rank	20%	20%	40%	20%	20%



Completer Success Rate

	Fall 05	Fall 06	Fall 07	Fall 08	Fall 09
GCC	88%	87%	87%	89%	88%
MCCD	90%	90%	89%	90%	89%
National Median	85%	85%	83%	84%	84%
GCC National Rank	74%	71%	77%	86%	78%
GCC District Rank	0%	10%	0%	10%	10%

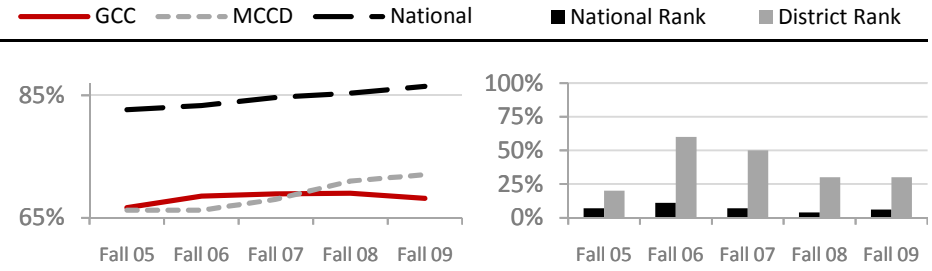


National Community College Benchmark Project (NCCBP) Trends

Credit Developmental/ Remedial Course Retention and Success Rates

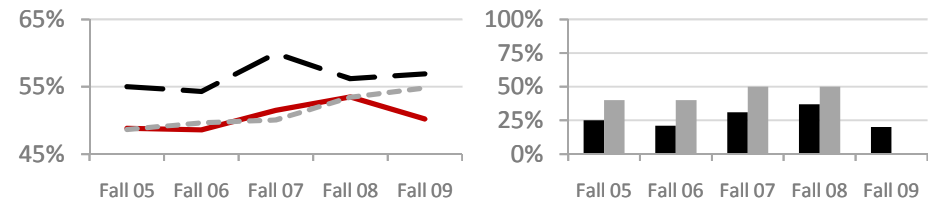
Math Retention Rate

	Fall 05	Fall 06	Fall 07	Fall 08	Fall 09
GCC	67%	69%	69%	69%	68%
MCCD	66%	66%	68%	71%	72%
National Median	83%	83%	85%	85%	86%
GCC National Rank	7%	11%	7%	4%	6%
GCC District Rank	20%	60%	50%	30%	30%



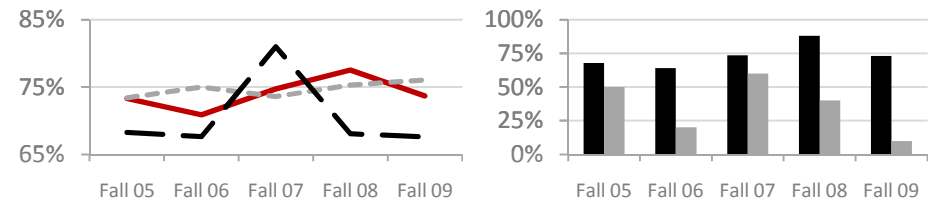
Math Enrollee Success Rate

	Fall 05	Fall 06	Fall 07	Fall 08	Fall 09
GCC	49%	49%	52%	54%	50%
MCCD	49%	50%	50%	53%	55%
National Median	55%	54%	60%	56%	57%
GCC National Rank	25%	21%	31%	37%	20%
GCC District Rank	40%	40%	50%	50%	0%



Math Completer Success Rate

	Fall 05	Fall 06	Fall 07	Fall 08	Fall 09
GCC	73%	71%	75%	78%	74%
MCCD	73%	75%	74%	75%	76%
National Median	68%	68%	81%	68%	68%
GCC National Rank	68%	64%	74%	88%	73%
GCC District Rank	50%	20%	60%	40%	10%

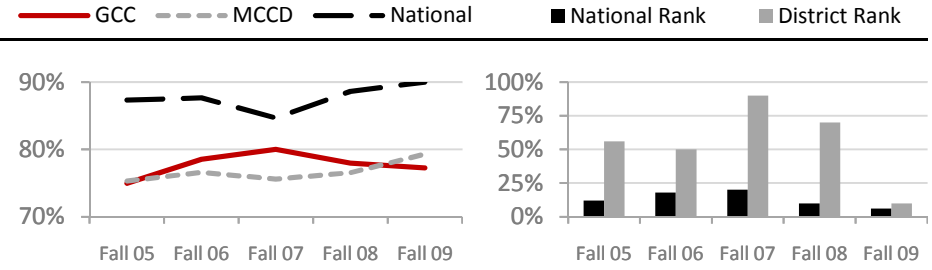


National Community College Benchmark Project (NCCBP) Trends

Credit Developmental/ Remedial Course Retention and Success Rates

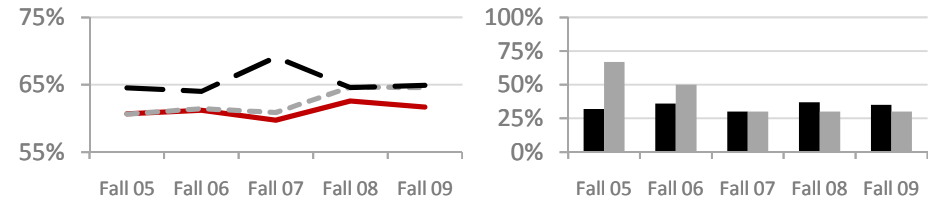
Writing Retention Rate

	Fall 05	Fall 06	Fall 07	Fall 08	Fall 09
GCC	75%	79%	80%	78%	77%
MCCD	75%	77%	76%	77%	79%
National Median	87%	88%	85%	89%	90%
GCC National Rank	12%	18%	20%	10%	6%
GCC District Rank	56%	50%	90%	70%	10%



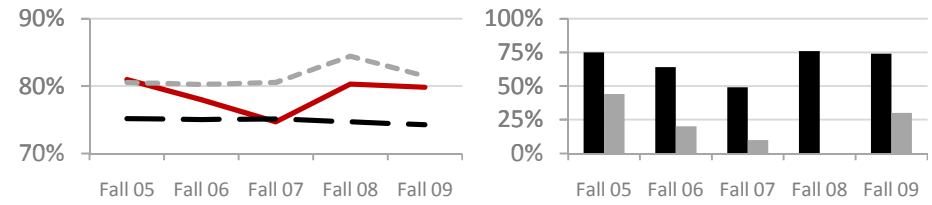
Writing Enrollee Success Rate

	Fall 05	Fall 06	Fall 07	Fall 08	Fall 09
GCC	61%	61%	60%	63%	62%
MCCD	61%	61%	61%	65%	65%
National Median	65%	64%	69%	65%	65%
GCC National Rank	32%	36%	30%	37%	35%
GCC District Rank	67%	50%	30%	30%	30%



Writing Completer Success Rate

	Fall 05	Fall 06	Fall 07	Fall 08	Fall 09
GCC	81%	78%	75%	80%	80%
MCCD	81%	80%	81%	84%	81%
National Median	75%	75%	75%	75%	74%
GCC National Rank	75%	64%	49%	76%	74%
GCC District Rank	44%	20%	10%	0%	30%

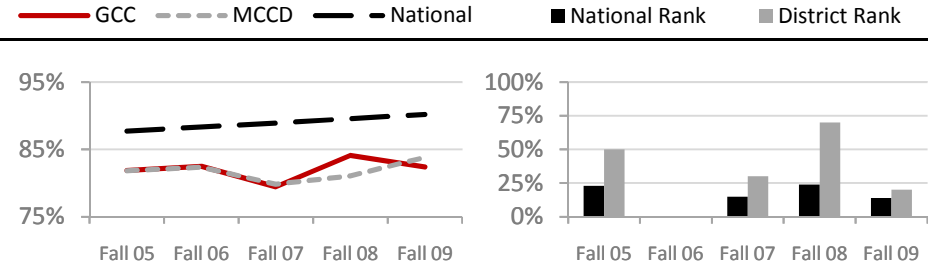


National Community College Benchmark Project (NCCBP) Trends

Credit Developmental/ Remedial Course Retention and Success Rates

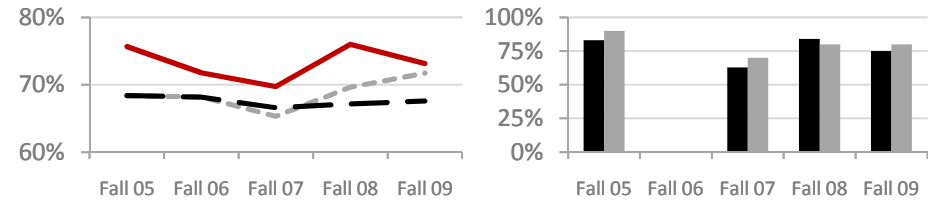
Reading Retention Rate

	Fall 05	Fall 06	Fall 07	Fall 08	Fall 09
GCC	82%	82%	79%	84%	82%
MCCD	82%	82%	80%	81%	84%
National Median	88%	88%	89%	90%	90%
GCC National Rank	23%	n/a	15%	24%	14%
GCC District Rank	50%	n/a	30%	70%	20%



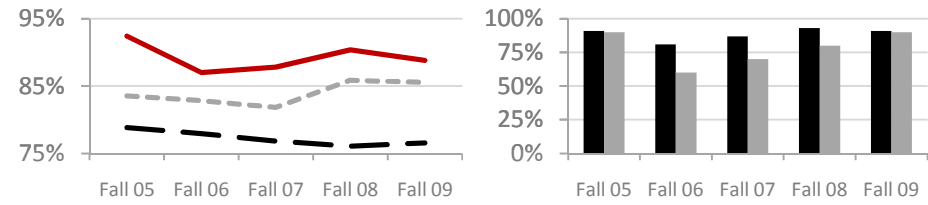
Reading Enrollee Success Rate

	Fall 05	Fall 06	Fall 07	Fall 08	Fall 09
GCC	76%	72%	70%	76%	73%
MCCD	68%	68%	65%	70%	72%
National Median	68%	68%	67%	67%	68%
GCC National Rank	83%	n/a	63%	84%	75%
GCC District Rank	90%	n/a	70%	80%	80%



Reading Completer Success Rate

	Fall 05	Fall 06	Fall 07	Fall 08	Fall 09
GCC	92%	87%	88%	90%	89%
MCCD	84%	83%	82%	86%	86%
National Median	79%	78%	77%	76%	77%
GCC National Rank	91%	81%	87%	93%	91%
GCC District Rank	90%	60%	70%	80%	90%

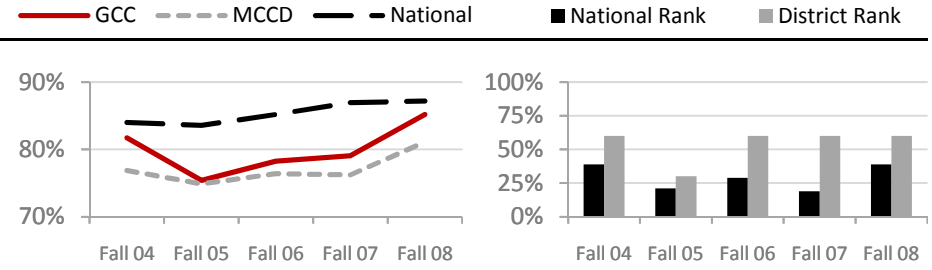


National Community College Benchmark Project (NCCBP) Trends

Credit Developmental/ Remedial Student Retention and Success in First College-level Courses

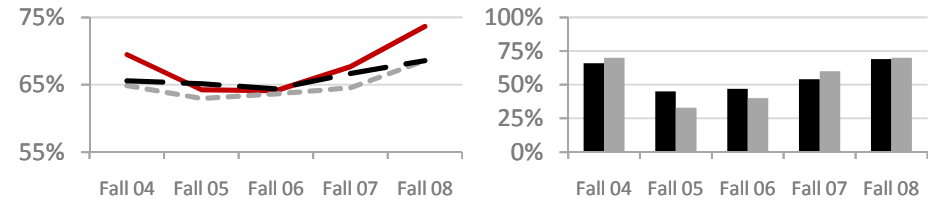
Math Retention Rate

	Fall 04	Fall 05	Fall 06	Fall 07	Fall 08
GCC	82%	75%	78%	79%	85%
MCCD	77%	75%	76%	76%	81%
National Median	84%	84%	85%	87%	87%
GCC National Rank	39%	21%	29%	19%	39%
GCC District Rank	60%	30%	60%	60%	60%



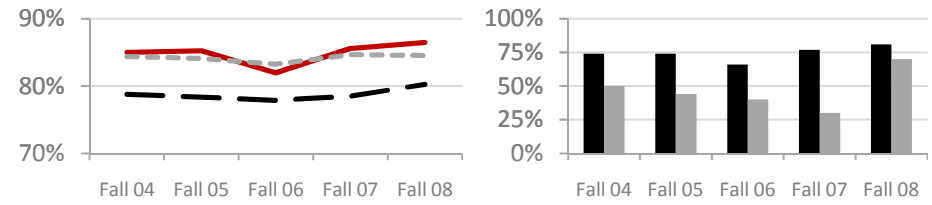
Math Enrollee Success Rate ← KSI

GCC	69%	64%	64%	68%	74%
MCCD	65%	63%	64%	65%	69%
National Median	66%	65%	64%	67%	69%
GCC National Rank	66%	45%	47%	54%	69%
GCC District Rank	70%	33%	40%	60%	70%



Math Completer Success Rate

GCC	85%	85%	82%	86%	86%
MCCD	84%	84%	83%	85%	85%
National Median	79%	78%	78%	78%	80%
GCC National Rank	74%	74%	66%	77%	81%
GCC District Rank	50%	44%	40%	30%	70%

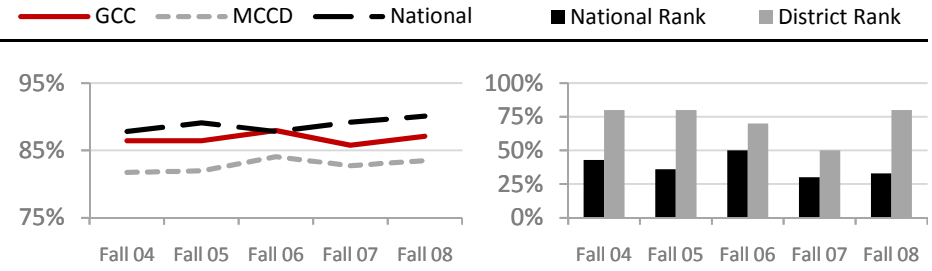


National Community College Benchmark Project (NCCBP) Trends

Credit Developmental/ Remedial Student Retention and Success in First College-level Courses

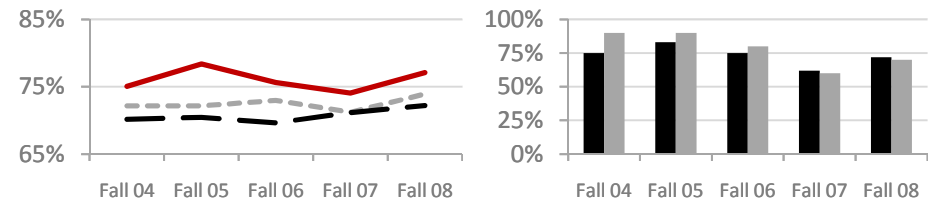
Writing Retention Rate

	Fall 04	Fall 05	Fall 06	Fall 07	Fall 08
GCC	86%	86%	88%	86%	87%
MCCD	82%	82%	84%	83%	83%
National Median	88%	89%	88%	89%	90%
GCC National Rank	43%	36%	50%	30%	33%
GCC District Rank	80%	80%	70%	50%	80%



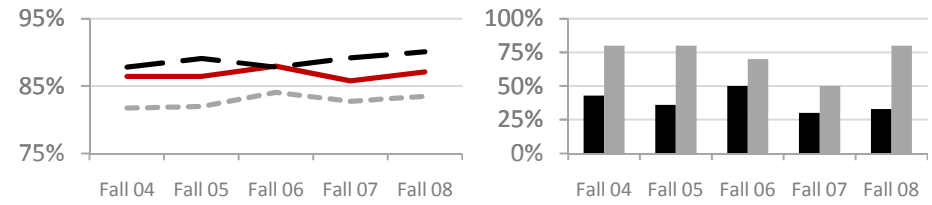
Writing Enrollee Success Rate ← KSI

	Fall 04	Fall 05	Fall 06	Fall 07	Fall 08
GCC	75%	78%	76%	74%	77%
MCCD	72%	72%	73%	71%	74%
National Median	70%	70%	70%	71%	72%
GCC National Rank	75%	83%	75%	62%	72%
GCC District Rank	90%	90%	80%	60%	70%



Writing Completer Success Rate

	Fall 04	Fall 05	Fall 06	Fall 07	Fall 08
GCC	87%	91%	86%	86%	89%
MCCD	88%	88%	87%	86%	89%
National Median	82%	80%	81%	81%	81%
GCC National Rank	76%	93%	77%	76%	83%
GCC District Rank	30%	70%	40%	50%	30%



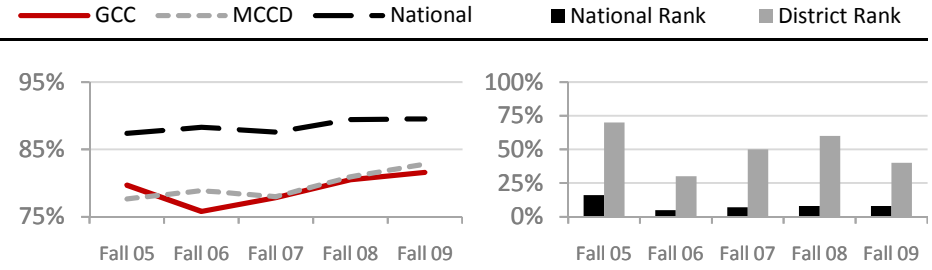
National Community College Benchmark Project (NCCBP) Trends

Retention and Success in Core

Academic Skill Areas

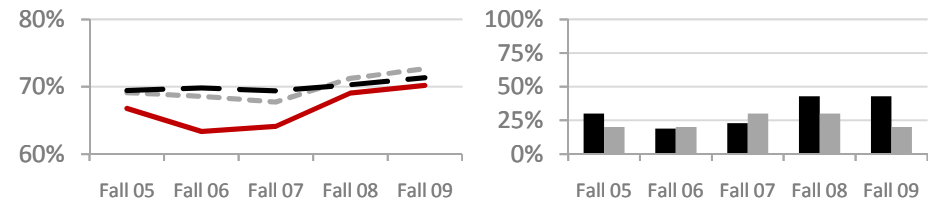
Comp I Retention Rate

	Fall 05	Fall 06	Fall 07	Fall 08	Fall 09
GCC	80%	76%	78%	81%	82%
MCCD	78%	79%	78%	81%	83%
National Median	87%	88%	88%	89%	90%
GCC National Rank	16%	5%	7%	8%	8%
GCC District Rank	70%	30%	50%	60%	40%



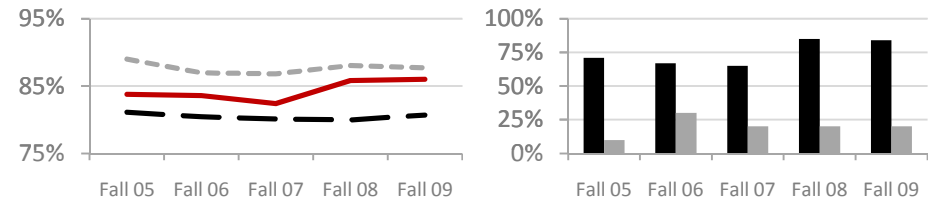
Comp I Enrollee Success Rate

	Fall 05	Fall 06	Fall 07	Fall 08	Fall 09
GCC	67%	63%	64%	69%	70%
MCCD	69%	69%	68%	71%	73%
National Median	69%	70%	69%	70%	71%
GCC National Rank	30%	19%	23%	43%	43%
GCC District Rank	20%	20%	30%	30%	20%



Comp I Completer Success Rate

	Fall 05	Fall 06	Fall 07	Fall 08	Fall 09
GCC	84%	84%	82%	86%	86%
MCCD	89%	87%	87%	88%	88%
National Median	81%	80%	80%	80%	81%
GCC National Rank	71%	67%	65%	85%	84%
GCC District Rank	10%	30%	20%	20%	20%



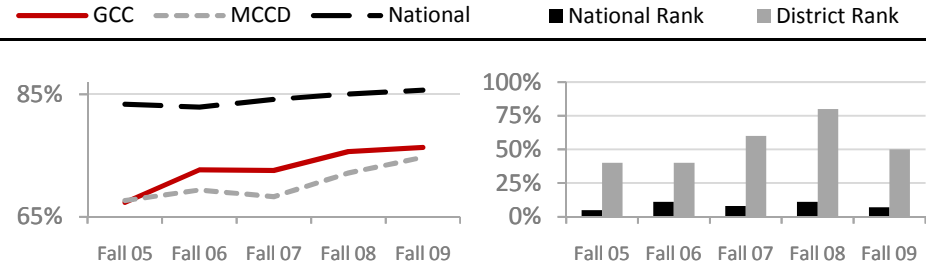
National Community College Benchmark Project (NCCBP) Trends

Retention and Success in Core

Academic Skill Areas

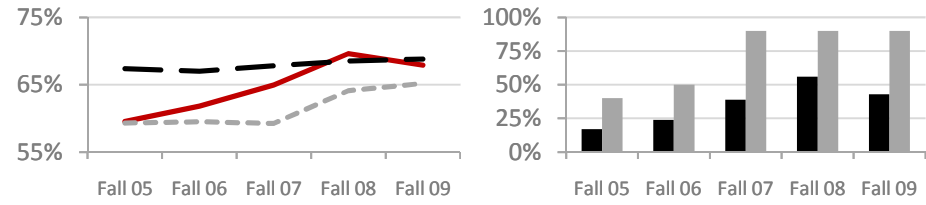
Comp II Retention Rate

	Fall 05	Fall 06	Fall 07	Fall 08	Fall 09
GCC	67%	73%	73%	76%	76%
MCCD	68%	69%	68%	72%	75%
National Median	83%	83%	84%	85%	86%
GCC National Rank	5%	11%	8%	11%	7%
GCC District Rank	40%	40%	60%	80%	50%



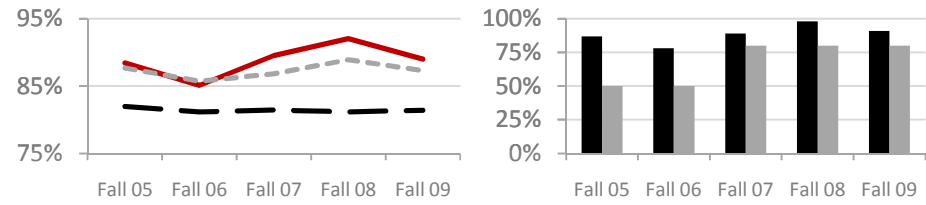
Comp II Enrollee Success Rate

	Fall 05	Fall 06	Fall 07	Fall 08	Fall 09
GCC	60%	62%	65%	70%	68%
MCCD	59%	59%	59%	64%	65%
National Median	67%	67%	68%	69%	69%
GCC National Rank	17%	24%	39%	56%	43%
GCC District Rank	40%	50%	90%	90%	90%



Comp II Completer Success Rate

	Fall 05	Fall 06	Fall 07	Fall 08	Fall 09
GCC	88%	85%	90%	92%	89%
MCCD	88%	86%	87%	89%	87%
National Median	82%	81%	81%	81%	81%
GCC National Rank	87%	78%	89%	98%	91%
GCC District Rank	50%	50%	80%	80%	80%



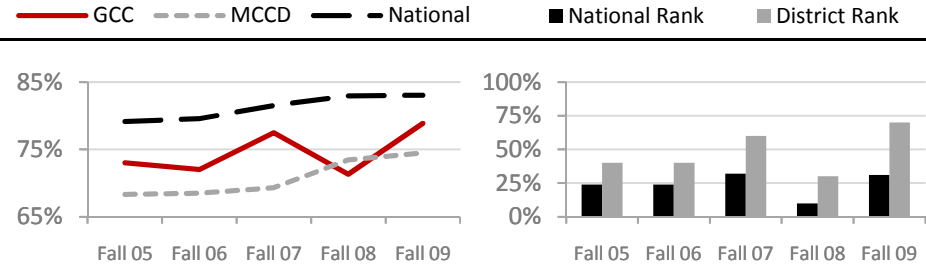
National Community College Benchmark Project (NCCBP) Trends

Retention and Success in Core

Academic Skill Areas

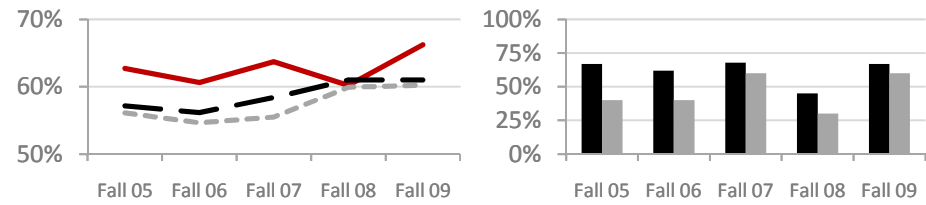
Algebra Retention Rate

Academic Skill Areas	Fall 05	Fall 06	Fall 07	Fall 08	Fall 09
GCC	73%	72%	77%	71%	79%
MCCD	68%	69%	69%	73%	75%
National Median	79%	80%	82%	83%	83%
GCC National Rank	24%	24%	32%	10%	31%
GCC District Rank	40%	40%	60%	30%	70%



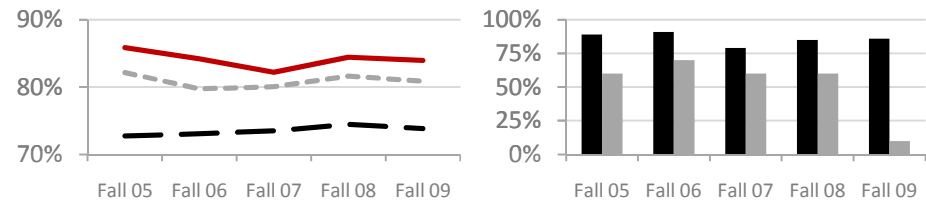
Algebra Enrollee Success Rate

Academic Skill Areas	Fall 05	Fall 06	Fall 07	Fall 08	Fall 09
GCC	63%	61%	64%	60%	66%
MCCD	56%	55%	56%	60%	60%
National Median	57%	56%	58%	61%	61%
GCC National Rank	67%	62%	68%	45%	67%
GCC District Rank	40%	40%	60%	30%	60%



Algebra Completer Success Rate

Academic Skill Areas	Fall 05	Fall 06	Fall 07	Fall 08	Fall 09
GCC	86%	84%	82%	84%	84%
MCCD	82%	80%	80%	82%	81%
National Median	73%	73%	73%	74%	74%
GCC National Rank	89%	91%	79%	85%	86%
GCC District Rank	60%	70%	60%	60%	10%



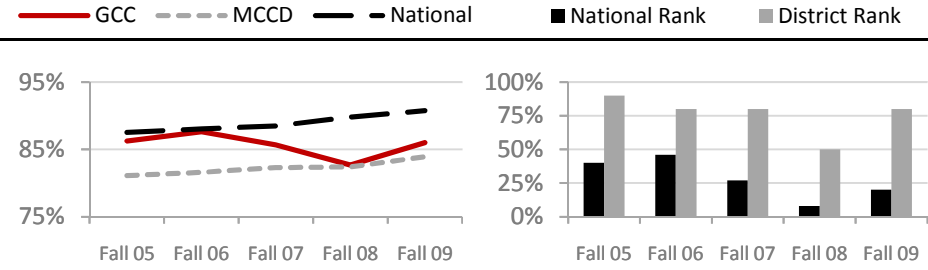
National Community College Benchmark Project (NCCBP) Trends

Retention and Success in Core

Academic Skill Areas

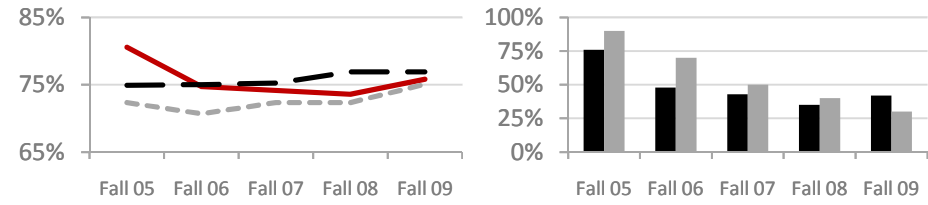
Speech Retention Rate

	Fall 05	Fall 06	Fall 07	Fall 08	Fall 09
GCC	86%	88%	86%	83%	86%
MCCD	81%	82%	82%	82%	84%
National Median	88%	88%	88%	90%	91%
GCC National Rank	40%	46%	27%	8%	20%
GCC District Rank	90%	80%	80%	50%	80%



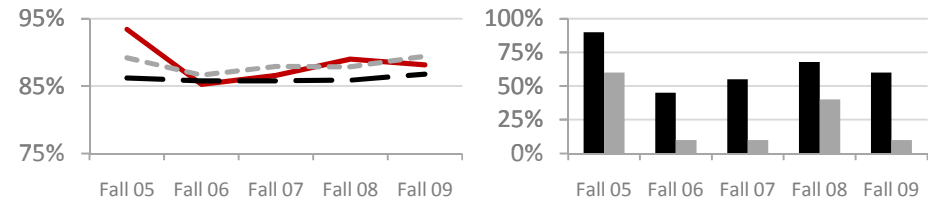
Speech Enrollee Success Rate

	Fall 05	Fall 06	Fall 07	Fall 08	Fall 09
GCC	81%	75%	74%	74%	76%
MCCD	72%	71%	72%	72%	75%
National Median	75%	75%	75%	77%	77%
GCC National Rank	76%	48%	43%	35%	42%
GCC District Rank	90%	70%	50%	40%	30%



Speech Completer Success Rate

	Fall 05	Fall 06	Fall 07	Fall 08	Fall 09
GCC	93%	85%	87%	89%	88%
MCCD	89%	87%	88%	88%	89%
National Median	86%	86%	86%	86%	87%
GCC National Rank	90%	45%	55%	68%	60%
GCC District Rank	60%	10%	10%	40%	10%

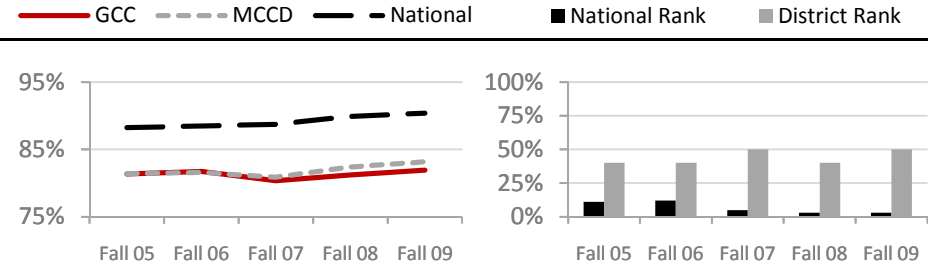


National Community College Benchmark Project (NCCBP) Trends

Institution-wide Credit Grades

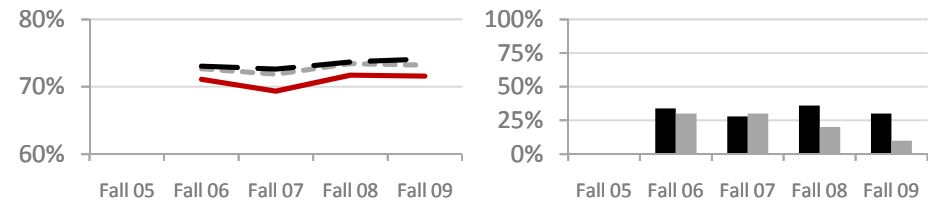
Retention Rate

	Fall 05	Fall 06	Fall 07	Fall 08	Fall 09
GCC	81%	82%	80%	81%	82%
MCCD	81%	82%	81%	82%	83%
National Median	88%	88%	89%	90%	90%
GCC National Rank	11%	12%	5%	3%	3%
GCC District Rank	40%	40%	50%	40%	50%



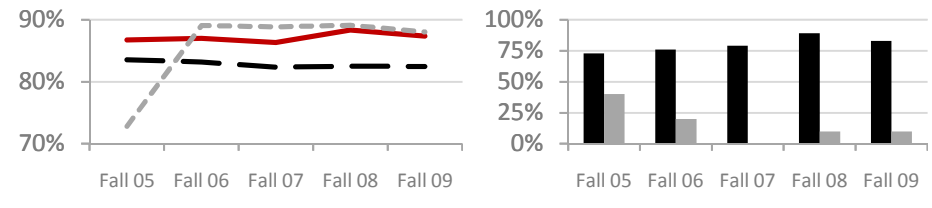
Enrollee Success Rate

GCC	n/a	71%	69%	72%	72%
MCCD	n/a	73%	72%	73%	73%
National Median	n/a	73%	73%	74%	74%
GCC National Rank	n/a	34%	28%	36%	30%
GCC District Rank	n/a	30%	30%	20%	10%



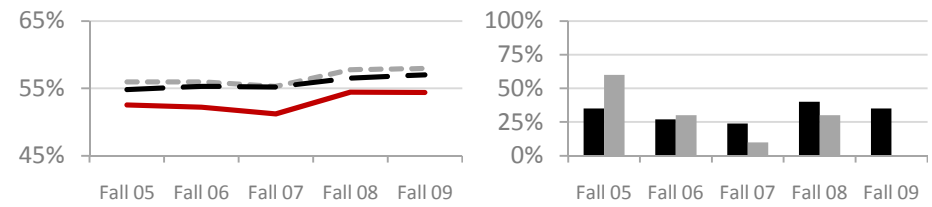
Completer Success Rate

GCC	87%	87%	86%	88%	87%
MCCD	73%	89%	89%	89%	88%
National Median	84%	83%	82%	83%	82%
GCC National Rank	73%	76%	79%	89%	83%
GCC District Rank	40%	20%	0%	10%	10%



% A & B Grades

GCC	53%	52%	51%	54%	54%
MCCD	56%	56%	55%	58%	58%
National Median	55%	55%	55%	57%	57%
GCC National Rank	35%	27%	24%	40%	35%
GCC District Rank	60%	30%	10%	30%	0%



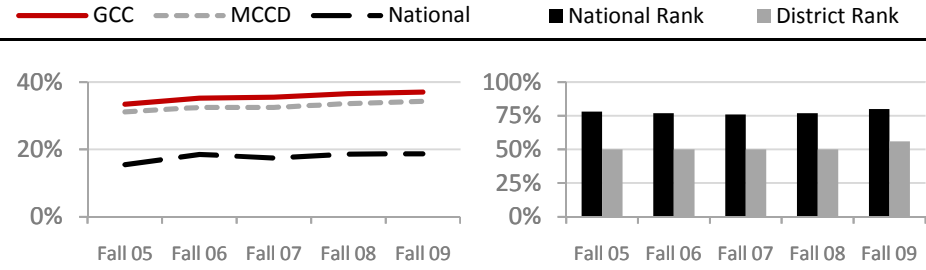
Rankings are the percent of benchmark participants with a value below GCC's value
Those in the top 15 and bottom 15 percentiles are highlighted

National Community College Benchmark Project (NCCBP) Trends

Minority Participation Rates

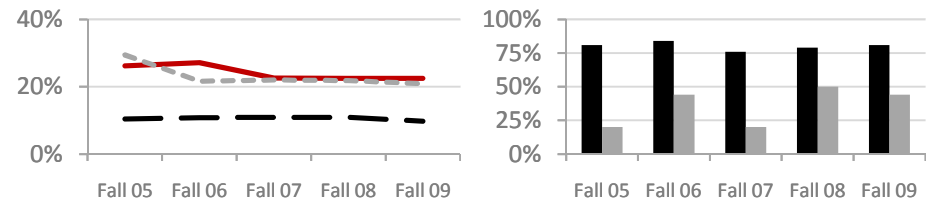
% Minority Credit Students < KSI

	Fall 05	Fall 06	Fall 07	Fall 08	Fall 09
GCC	33%	35%	35%	37%	37%
MCCD	31%	32%	33%	34%	34%
National Median	16%	19%	17%	19%	19%
GCC National Rank	78%	77%	76%	77%	80%
GCC District Rank	50%	50%	50%	50%	56%



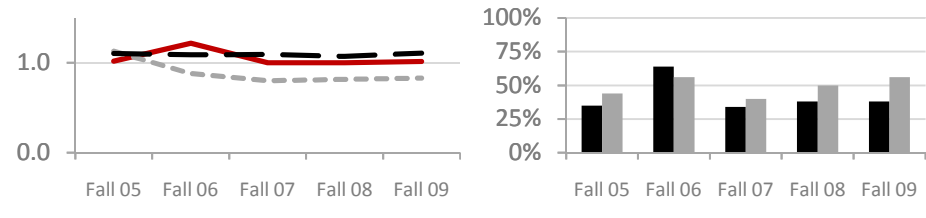
% Minority Employees

	Fall 05	Fall 06	Fall 07	Fall 08	Fall 09
GCC	26%	27%	23%	22%	23%
MCCD	29%	22%	22%	22%	21%
National Median	10%	11%	11%	11%	10%
GCC National Rank	81%	84%	76%	79%	81%
GCC District Rank	20%	44%	20%	50%	44%



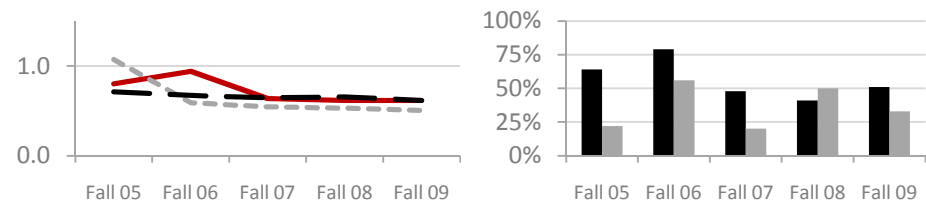
Minority Student/Population Ratio

	Fall 05	Fall 06	Fall 07	Fall 08	Fall 09
GCC	1.02	1.22	1.00	1.00	1.02
MCCD	1.13	0.88	0.80	0.82	0.83
National Median	1.10	1.09	1.09	1.07	1.11
GCC National Rank	35%	64%	34%	38%	38%
GCC District Rank	44%	56%	40%	50%	56%



Minority Employee/Population Ratio

	Fall 05	Fall 06	Fall 07	Fall 08	Fall 09
GCC	0.80	0.94	0.64	0.62	0.62
MCCD	1.07	0.59	0.54	0.53	0.50
National Median	0.71	0.67	0.65	0.65	0.61
GCC National Rank	64%	79%	48%	41%	51%
GCC District Rank	22%	56%	20%	50%	33%



Rankings are the percent of benchmark participants with a value below GCC's value
Those in the top 15 and bottom 15 percentiles are highlighted

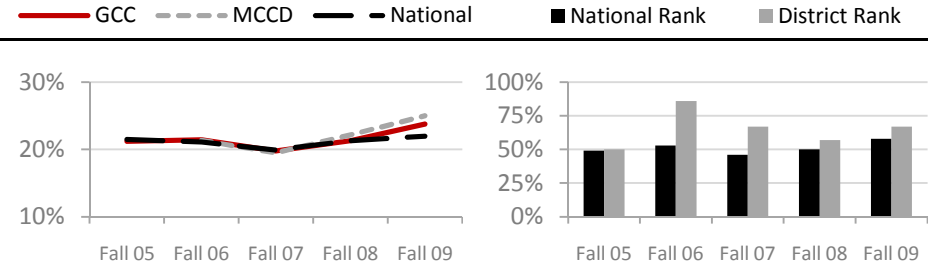
National Community College Benchmark Project (NCCBP) Trends

High School Graduates

Enrolling at Institution

% Enrolling Public HS ← KSI

	Fall 05	Fall 06	Fall 07	Fall 08	Fall 09
GCC	21%	21%	20%	21%	24%
MCCD	n/a	21%	19%	22%	25%
National Median	21%	21%	20%	21%	22%
GCC National Rank	49%	53%	46%	50%	58%
GCC District Rank	50%	86%	67%	57%	67%



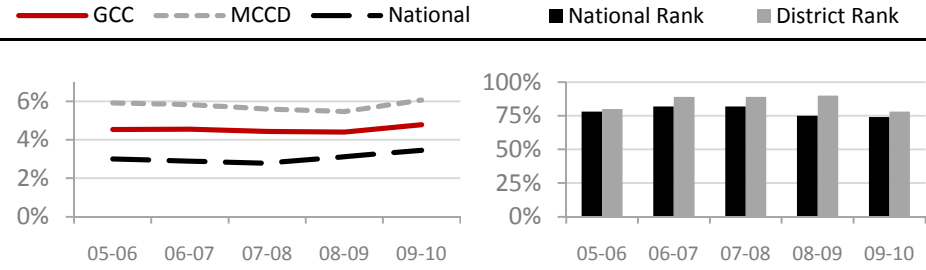
National Community College Benchmark Project (NCCBP) Trends

Market Penetration:

Credit and Non-credit Students

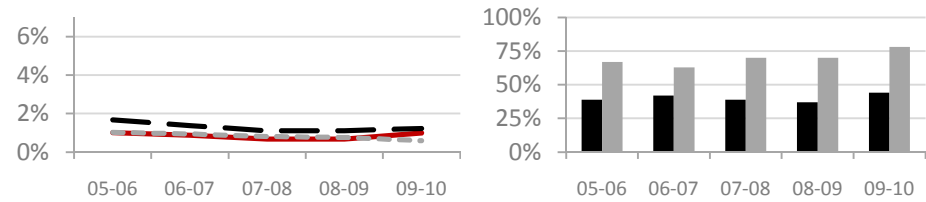
Credit Student Penetration Rate < KSI

	05-06	06-07	07-08	08-09	09-10
GCC	4.54%	4.55%	4.43%	4.41%	4.79%
MCCD	5.91%	5.84%	5.60%	5.46%	6.07%
National Median	3.01%	2.89%	2.79%	3.12%	3.45%
GCC National Rank	78%	82%	82%	75%	74%
GCC District Rank	80%	89%	89%	90%	78%



Non-credit Student Penetration Rate < KSI

	05-06	06-07	07-08	08-09	09-10
GCC	1.01%	0.88%	0.68%	0.67%	0.99%
MCCD	1.03%	0.94%	0.81%	0.76%	0.59%
National Median	1.67%	1.38%	1.11%	1.11%	1.23%
GCC National Rank	39%	42%	39%	37%	44%
GCC District Rank	67%	63%	70%	70%	78%

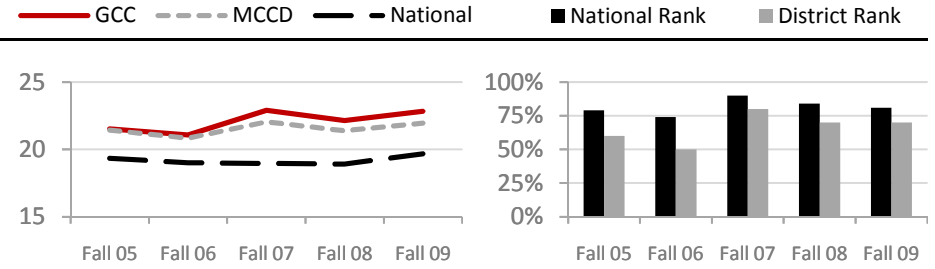


National Community College Benchmark Project (NCCBP) Trends

Average Credit Section Size

Average Credit Section Size < KSI

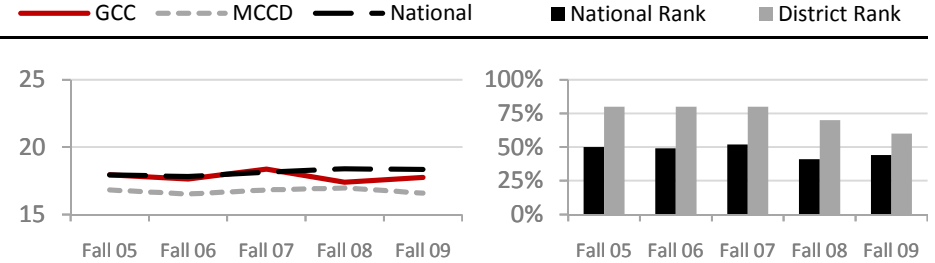
	Fall 05	Fall 06	Fall 07	Fall 08	Fall 09
GCC	21.5	21.1	22.9	22.2	22.8
MCCD	21.4	20.8	22.1	21.4	22.0
National Median	19.3	19.0	19.0	18.9	19.7
GCC National Rank	79%	74%	90%	84%	81%
GCC District Rank	60%	50%	80%	70%	70%



Credit Course Student/Faculty Ratio

Credit Course Student/Faculty Ratio < KSI

	Fall 05	Fall 06	Fall 07	Fall 08	Fall 09
GCC	18.0	17.6	18.4	17.4	17.8
MCCD	16.8	16.5	16.8	17.0	16.6
National Median	17.9	17.8	18.1	18.4	18.3
GCC National Rank	50%	49%	52%	41%	44%
GCC District Rank	80%	80%	80%	70%	60%



National Community College Benchmark Project (NCCBP) Trends

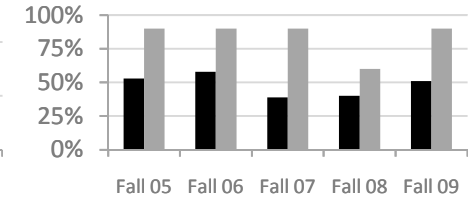
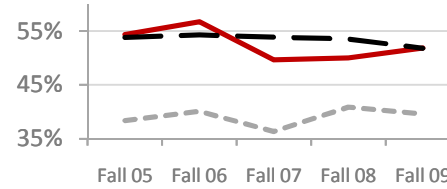
Instructional Faculty Load

% Credit Hours by Full-time Faculty

	Fall 05	Fall 06	Fall 07	Fall 08	Fall 09
GCC	54%	57%	50%	50%	52%
MCCD	38%	40%	36%	41%	40%
National Median	54%	54%	54%	54%	52%
GCC National Rank	53%	58%	39%	40%	51%
GCC District Rank	90%	90%	90%	60%	90%

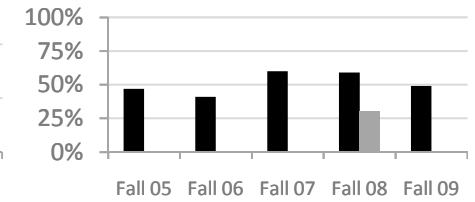
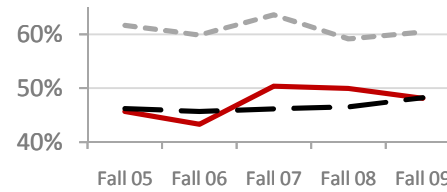
— GCC - - - - - MCCD - - - - - National

■ National Rank ■ District Rank



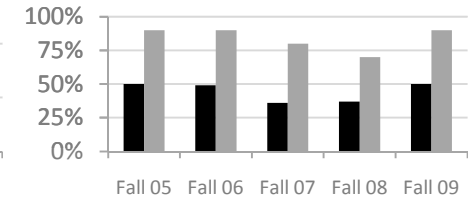
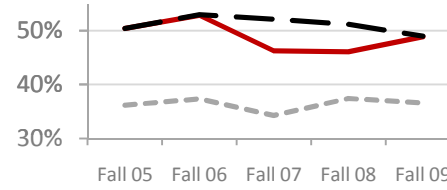
% Credit Hours by Part-time Faculty

	Fall 05	Fall 06	Fall 07	Fall 08	Fall 09
GCC	46%	43%	50%	50%	48%
MCCD	62%	60%	64%	59%	60%
National Median	46%	46%	46%	46%	48%
GCC National Rank	47%	41%	60%	59%	49%
GCC District Rank	0%	0%	0%	30%	0%



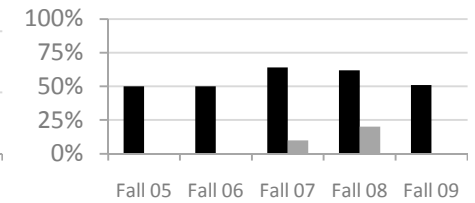
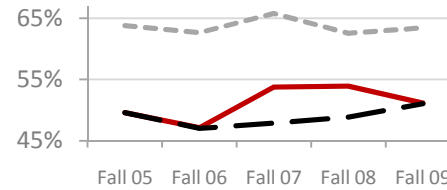
% Sections by Full-time Faculty

	Fall 05	Fall 06	Fall 07	Fall 08	Fall 09
GCC	50%	53%	46%	46%	49%
MCCD	36%	37%	34%	37%	37%
National Median	50%	53%	52%	51%	49%
GCC National Rank	50%	49%	36%	37%	50%
GCC District Rank	90%	90%	80%	70%	90%



% Sections by Part-time Faculty

	Fall 05	Fall 06	Fall 07	Fall 08	Fall 09
GCC	50%	47%	54%	54%	51%
MCCD	64%	63%	66%	63%	63%
National Median	50%	47%	48%	49%	51%
GCC National Rank	50%	50%	64%	62%	51%
GCC District Rank	0%	0%	10%	20%	0%



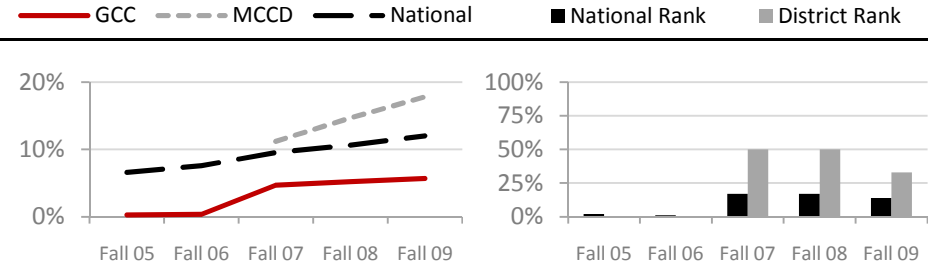
Rankings are the percent of benchmark participants with a value below GCC's value
Those in the top 15 and bottom 15 percentiles are highlighted

National Community College Benchmark Project (NCCBP) Trends

Credit Distance Learning Sections and Credit Hours

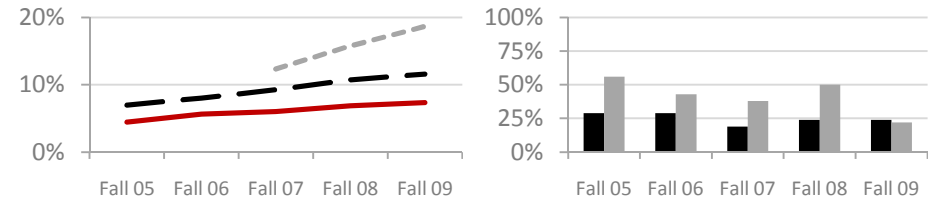
DL % of Credit Hours

	Fall 05	Fall 06	Fall 07	Fall 08	Fall 09
GCC	0.3%	0.3%	4.7%	5.2%	5.7%
MCCD	n/a	n/a	11%	14.7%	17.8%
National Median	6.6%	7.6%	9.6%	10.6%	12.0%
GCC National Rank	2%	1%	17%	17%	14%
GCC District Rank	0%	0%	50%	50%	33%



DL % of Total Credit Sections

	Fall 05	Fall 06	Fall 07	Fall 08	Fall 09
GCC	4.5%	5.6%	6.0%	6.9%	7.3%
MCCD	n/a	n/a	12%	15.8%	18.7%
National Median	7.0%	8.0%	9.2%	10.7%	11.6%
GCC National Rank	29%	29%	19%	24%	24%
GCC District Rank	56%	43%	38%	50%	22%

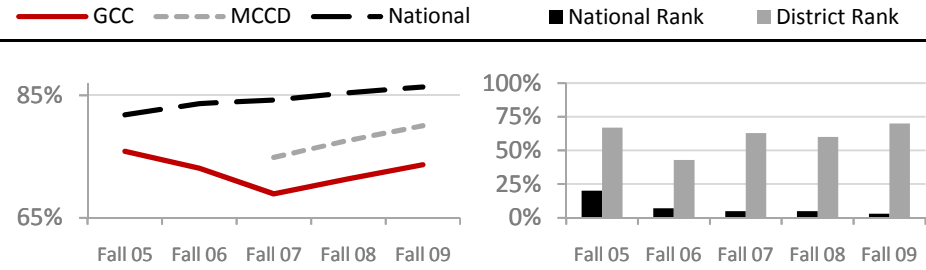


National Community College Benchmark Project (NCCBP) Trends

Distance Learning Grades

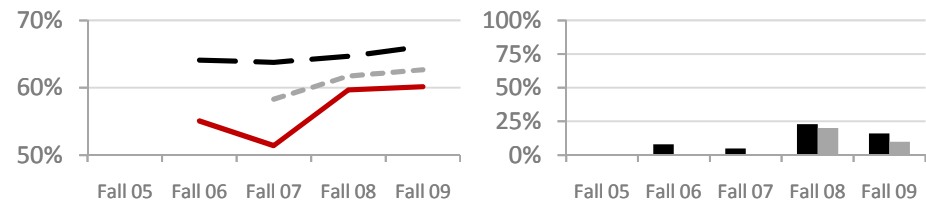
Retention Rate

	Fall 05	Fall 06	Fall 07	Fall 08	Fall 09
GCC	76%	73%	69%	71%	74%
MCCD	n/a	n/a	75%	78%	80%
National Median	82%	84%	84%	85%	86%
GCC National Rank	20%	7%	5%	5%	3%
GCC District Rank	67%	43%	63%	60%	70%



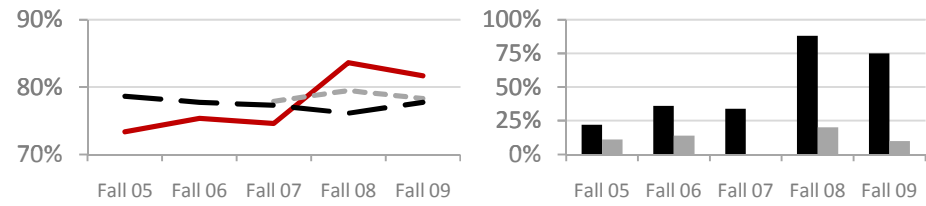
Enrollee Success Rate ← KSI

	Fall 05	Fall 06	Fall 07	Fall 08	Fall 09
GCC	n/a	55%	51%	60%	60%
MCCD	n/a	n/a	58%	62%	63%
National Median	n/a	64%	64%	65%	66%
GCC National Rank	n/a	8%	5%	23%	16%
GCC District Rank	n/a	0%	0%	20%	10%



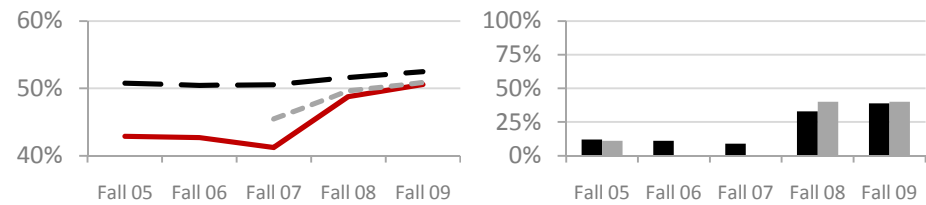
Completer Success Rate

	Fall 05	Fall 06	Fall 07	Fall 08	Fall 09
GCC	73%	75%	75%	84%	82%
MCCD	n/a	n/a	78%	80%	78%
National Median	79%	78%	77%	76%	78%
GCC National Rank	22%	36%	34%	88%	75%
GCC District Rank	11%	14%	0%	20%	10%



% A & B Grades

	Fall 05	Fall 06	Fall 07	Fall 08	Fall 09
GCC	43%	43%	41%	49%	51%
MCCD	n/a	n/a	45%	50%	51%
National Median	51%	50%	51%	52%	52%
GCC National Rank	12%	11%	9%	33%	39%
GCC District Rank	11%	0%	0%	40%	40%



Rankings are the percent of benchmark participants with a value below GCC's value
Those in the top 15 and bottom 15 percentiles are highlighted

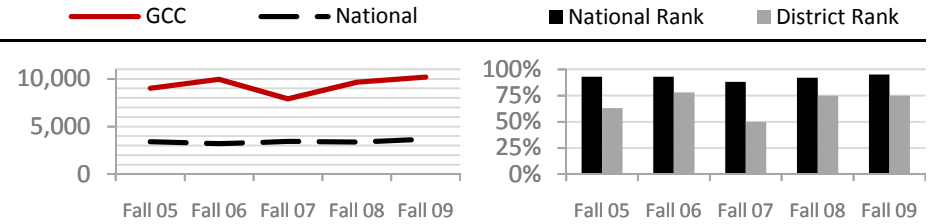
National Community College Benchmark Project (NCCBP) Trends

Student/Professional Student

Services Staff Ratio *← KSI*

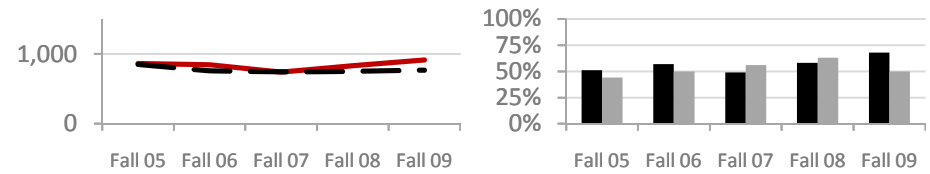
Career Services

	Fall 05	Fall 06	Fall 07	Fall 08	Fall 09
GCC	9,000	9,945	7,916	9,662	10,195
National Median	3,413	3,189	3,438	3,365	3,665
GCC National Rank	93%	93%	88%	92%	95%
GCC District Rank	63%	78%	50%	75%	75%



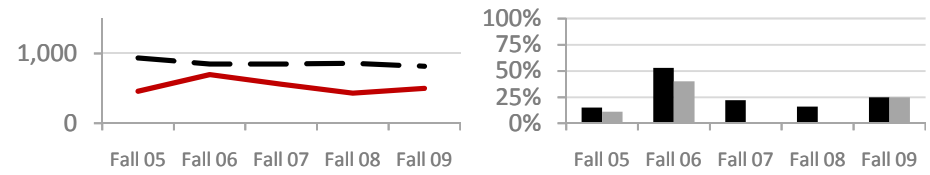
Counseling and Advising

	Fall 05	Fall 06	Fall 07	Fall 08	Fall 09
GCC	865	846	738	829	914
National Median	849	756	746	748	765
GCC National Rank	51%	57%	49%	58%	68%
GCC District Rank	44%	50%	56%	63%	50%



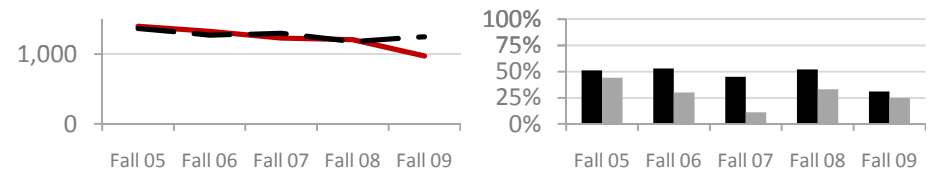
Recruitment, Admissions, Registration

	Fall 05	Fall 06	Fall 07	Fall 08	Fall 09
GCC	458	698	559	432	503
National Median	938	847	850	860	816
GCC National Rank	15%	53%	22%	16%	25%
GCC District Rank	11%	40%	0%	0%	25%



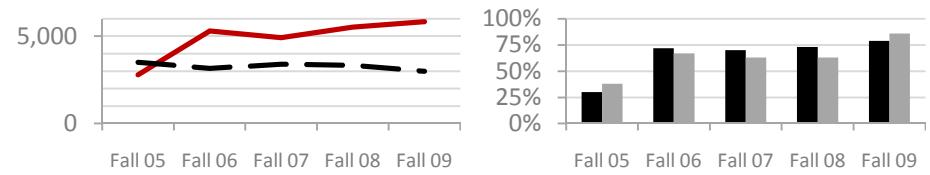
Financial Aid

	Fall 05	Fall 06	Fall 07	Fall 08	Fall 09
GCC	1,398	1,326	1,230	1,208	971
National Median	1,367	1,269	1,297	1,179	1,249
GCC National Rank	51%	53%	45%	52%	31%
GCC District Rank	44%	30%	11%	33%	25%



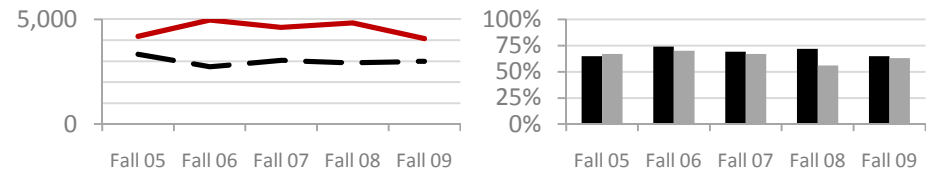
Student Activities

	Fall 05	Fall 06	Fall 07	Fall 08	Fall 09
GCC	2,796	5,304	4,918	5,521	5,826
National Median	3,508	3,156	3,398	3,345	3,001
GCC National Rank	30%	72%	70%	73%	79%
GCC District Rank	38%	67%	63%	63%	86%



Testing & Assessment Services

	Fall 05	Fall 06	Fall 07	Fall 08	Fall 09
GCC	4,194	4,972	4,611	4,831	4,078
National Median	3,340	2,739	3,045	2,920	3,000
GCC National Rank	65%	74%	69%	72%	65%
GCC District Rank	67%	70%	67%	56%	63%



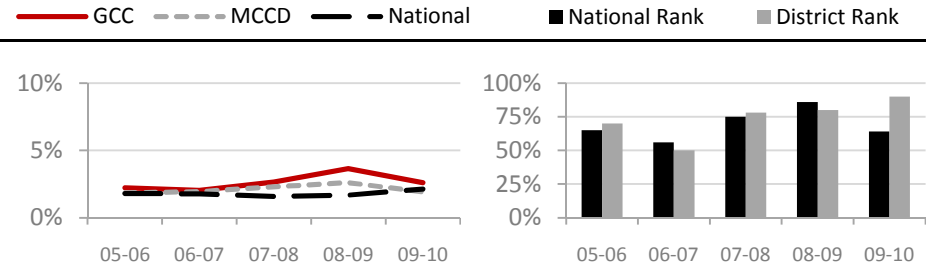
Rankings are the percent of benchmark participants with a value below GCC's value
Those in the top 15 and bottom 15 percentiles are highlighted

National Community College Benchmark Project (NCCBP) Trends

Retirements and Departures

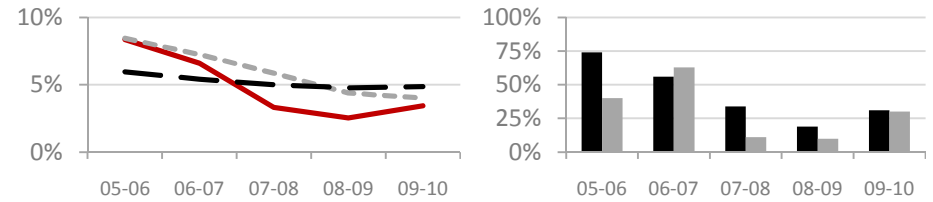
Retirement Rate

	05-06	06-07	07-08	08-09	09-10
GCC	2.2%	2.0%	2.7%	3.7%	2.6%
MCCD	1.8%	2.0%	2.3%	2.6%	1.9%
National Median	1.8%	1.8%	1.6%	1.7%	2.1%
GCC National Rank	65%	56%	75%	86%	64%
GCC District Rank	70%	50%	78%	80%	90%



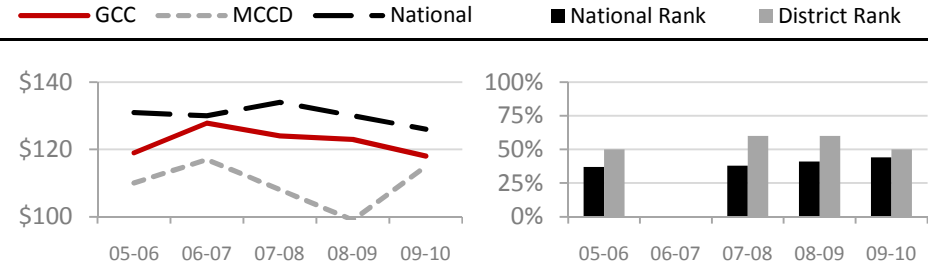
Departures Rate

	05-06	06-07	07-08	08-09	09-10
GCC	8.4%	6.6%	3.3%	2.5%	3.4%
MCCD	8.5%	7.2%	5.9%	4.4%	4.0%
National Median	6.0%	5.4%	5.0%	4.8%	4.9%
GCC National Rank	74%	56%	34%	19%	31%
GCC District Rank	40%	63%	11%	10%	30%



National Community College Benchmark Project (NCCBP) Trends

Cost Per Credit Hour and FTE Student	05-06	06-07	07-08	08-09	09-10
<i>Cost per Credit Hour</i>					
GCC	\$119	\$128	\$124	\$123	\$118
MCCD	\$110	\$117	\$108	\$99	\$115
National Median	\$131	\$130	\$134	\$130	\$126
GCC National Rank	37%	n/a	38%	41%	44%
GCC District Rank	50%	n/a	60%	60%	50%



<i>Cost per FTE Student</i>					
GCC	\$3,561	\$3,836	\$3,721	\$3,689	\$3,539
MCCD	\$3,313	\$3,505	\$3,255	\$2,981	\$3,445
National Median	\$3,923	\$3,904	\$4,019	\$3,914	\$3,766
GCC National Rank	37%	n/a	38%	41%	44%
GCC District Rank	50%	n/a	60%	60%	50%

