

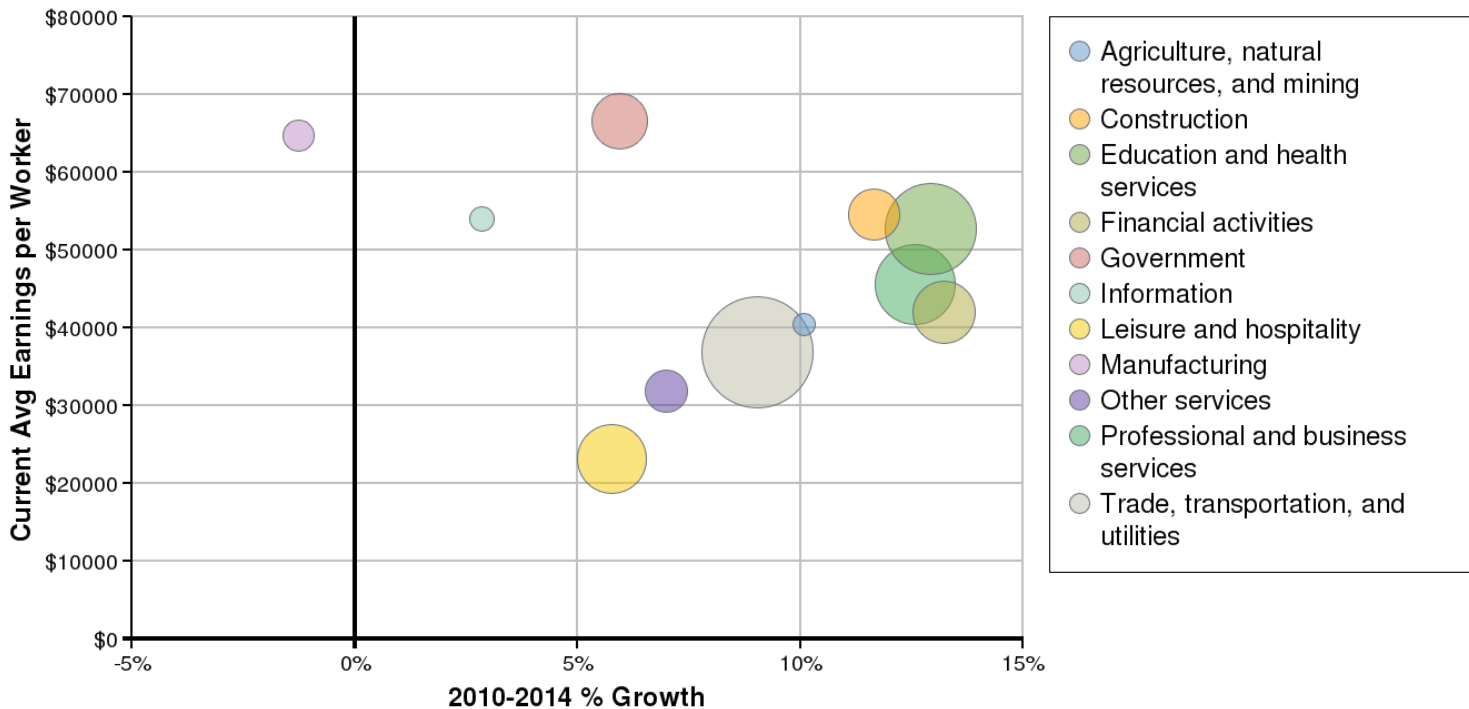
Region Info

Region: GCC Main + North

ZIP Areas: 85029 (in Maricopa county, Arizona), 85033 (in Maricopa county, Arizona), 85051 (in Maricopa county, Arizona), 85053 (in Maricopa county, Arizona), 85083 (in Maricopa county, Arizona), 85085 (in Maricopa county, Arizona), 85086 (in Maricopa county, Arizona), 85087 (in Maricopa county, Arizona), 85301 (in Maricopa county, Arizona), 85302 (in Maricopa county, Arizona), 85303 (in Maricopa county, Arizona), 85304 (in Maricopa county, Arizona), 85305 (in Maricopa county, Arizona), 85306 (in Maricopa county, Arizona), 85308 (in Maricopa county, Arizona), 85310 (in Maricopa county, Arizona), 85342 (in Maricopa county, Arizona), 85345 (in Maricopa county, Arizona), 85351 (in Maricopa county, Arizona), 85361 (in Maricopa county, Arizona), 85363 (in Maricopa county, Arizona), 85373 (in Maricopa county, Arizona), 85374 (in Maricopa county, Arizona), 85375 (in Maricopa county, Arizona), 85379 (in Maricopa county, Arizona), 85381 (in Maricopa county, Arizona), 85382 (in Maricopa county, Arizona), 85383 (in Maricopa county, Arizona), 85387 (in Maricopa county, Arizona), 85388 (in Maricopa county, Arizona)

Industry Size and Growth

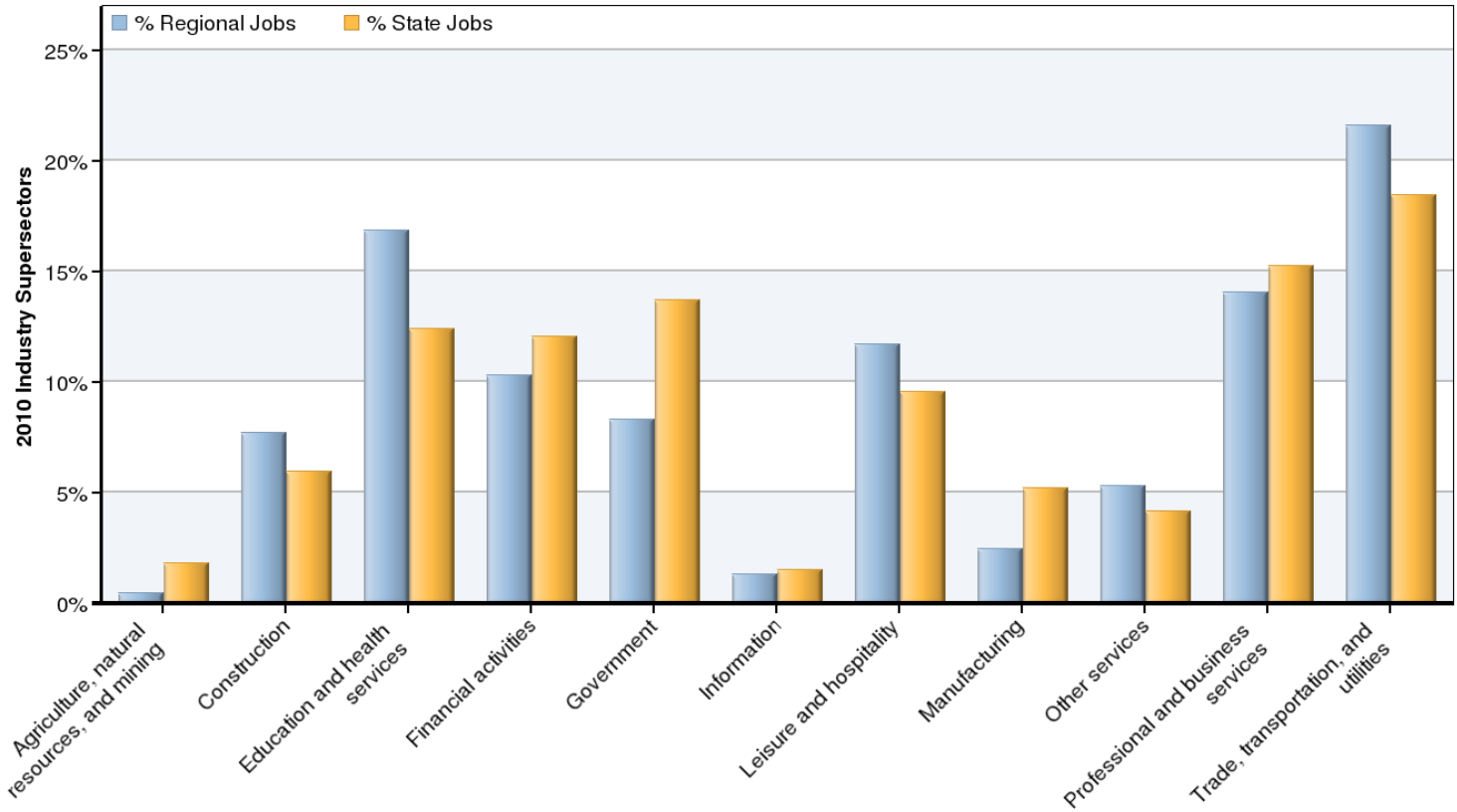
2010 - 2014 Size and Growth



| Description | 2010 Jobs | 2014 Jobs | Growth | % Growth | Current EPW |
|--|----------------|----------------|---------------|------------|-----------------|
| Agriculture, natural resources, and mining | 1,140 | 1,255 | 115 | 10% | \$40,435 |
| Construction | 20,052 | 22,391 | 2,339 | 12% | \$54,511 |
| Education and health services | 43,937 | 49,618 | 5,681 | 13% | \$52,764 |
| Financial activities | 26,924 | 30,487 | 3,563 | 13% | \$42,038 |
| Government | 21,695 | 22,985 | 1,290 | 6% | \$66,524 |
| Information | 3,357 | 3,453 | 96 | 3% | \$53,960 |
| Leisure and hospitality | 30,573 | 32,337 | 1,764 | 6% | \$23,166 |
| Manufacturing | 6,413 | 6,333 | -80 | -1% | \$64,760 |
| Other services | 13,775 | 14,739 | 964 | 7% | \$31,923 |
| Professional and business services | 36,738 | 41,360 | 4,622 | 13% | \$45,568 |
| Trade, transportation, and utilities | 56,417 | 61,523 | 5,106 | 9% | \$36,884 |
| Total | 261,020 | 286,480 | 25,460 | 10% | \$44,175 |

Source: EMSI Complete Employment - 1st Quarter 2010

2010 Industrial Makeup



| Description | 2010 Regional Jobs | % Regional Jobs | 2010 State Jobs | % State Jobs |
|--|--------------------|-----------------|-----------------|--------------|
| Agriculture, natural resources, and mining | 1,140 | 0.4% | 58,574 | 1.8% |
| Construction | 20,052 | 7.7% | 194,682 | 5.9% |
| Education and health services | 43,937 | 16.8% | 407,414 | 12.4% |
| Financial activities | 26,924 | 10.3% | 396,114 | 12.1% |
| Government | 21,695 | 8.3% | 450,577 | 13.7% |
| Information | 3,357 | 1.3% | 49,444 | 1.5% |
| Leisure and hospitality | 30,573 | 11.7% | 312,840 | 9.5% |
| Manufacturing | 6,413 | 2.5% | 171,541 | 5.2% |
| Other services | 13,775 | 5.3% | 136,588 | 4.2% |
| Professional and business services | 36,738 | 14.1% | 500,498 | 15.2% |
| Trade, transportation, and utilities | 56,417 | 21.6% | 605,995 | 18.5% |

Source: EMSI Complete Employment - 1st Quarter 2010

Occupation Size and Growth

2010 - 2014 Size and Growth

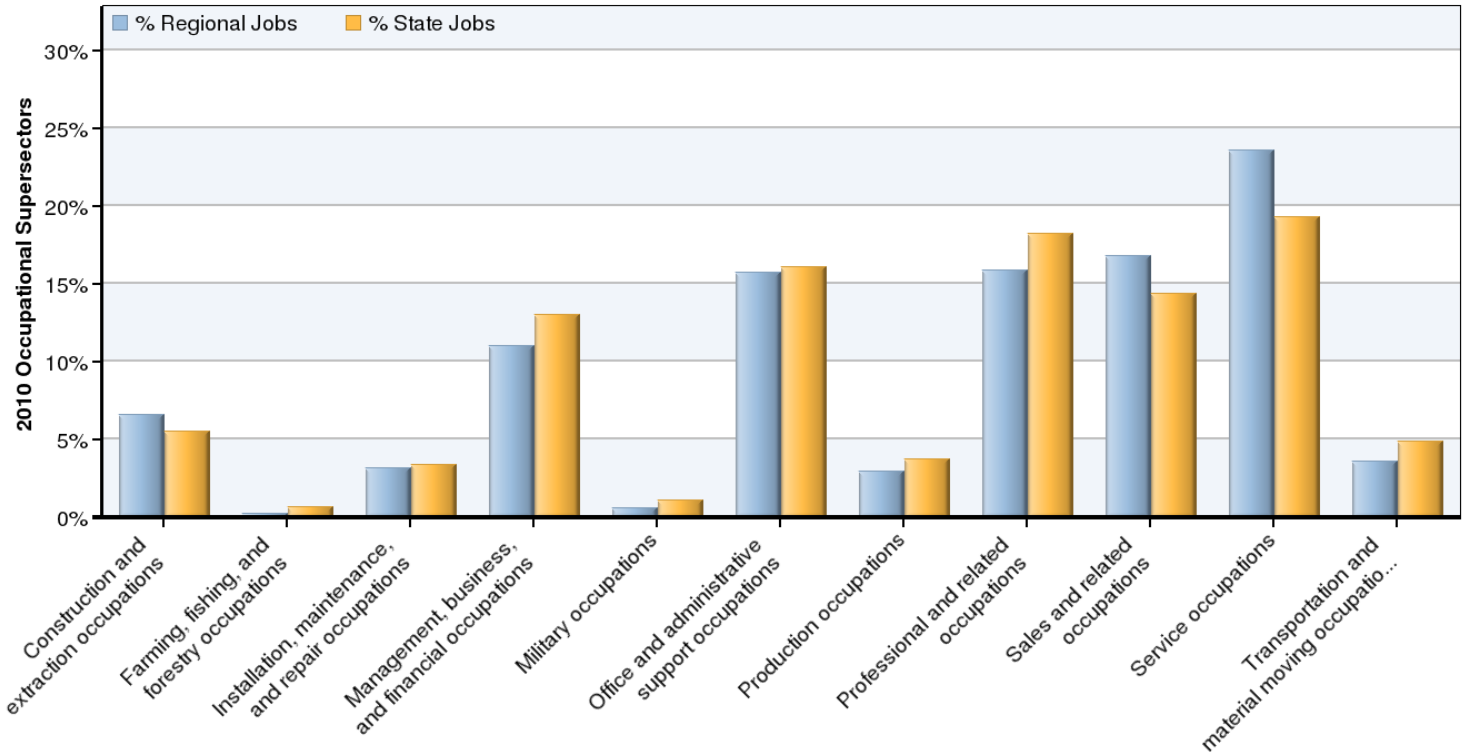


*Bubble size represents 2010 jobs in each supersector.

| Description | 2010 Jobs | 2014 Jobs | Growth | % Growth | Current Median Hourly Earnings |
|---|----------------|----------------|---------------|------------|--------------------------------|
| Construction and extraction occupations | 17,160 | 19,154 | 1,994 | 12% | \$18.82 |
| Farming, fishing, and forestry occupations | 552 | 558 | 6 | 1% | \$9.89 |
| Installation, maintenance, and repair occupations | 8,192 | 8,766 | 574 | 7% | \$18.07 |
| Management, business, and financial occupations | 28,774 | 32,207 | 3,433 | 12% | \$24.39 |
| Military occupations | 1,491 | 1,475 | -16 | -1% | \$13.34 |
| Office and administrative support occupations | 41,068 | 44,313 | 3,245 | 8% | \$14.12 |
| Production occupations | 7,644 | 8,038 | 394 | 5% | \$13.84 |
| Professional and related occupations | 41,460 | 46,241 | 4,781 | 12% | \$25.29 |
| Sales and related occupations | 43,771 | 48,739 | 4,968 | 11% | \$12.18 |
| Service occupations | 61,574 | 67,011 | 5,437 | 9% | \$10.71 |
| Transportation and material moving occupations | 9,335 | 9,979 | 644 | 7% | \$13.52 |
| Total | 261,020 | 286,480 | 25,460 | 10% | \$16.27 |

Source: EMSI Complete Employment - 1st Quarter 2010

2010 Occupational Makeup

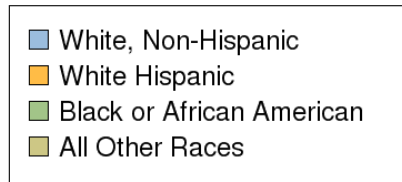
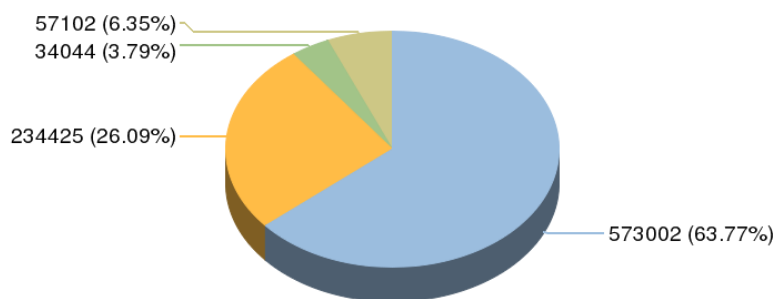


| Description | 2010 Regional Jobs | % Regional Jobs | 2010 State Jobs | % State Jobs |
|---|--------------------|-----------------|-----------------|--------------|
| Construction and extraction occupations | 17,160 | 6.6% | 180,474 | 5.5% |
| Farming, fishing, and forestry occupations | 552 | 0.2% | 21,332 | 0.6% |
| Installation, maintenance, and repair occupations | 8,192 | 3.1% | 110,577 | 3.4% |
| Management, business, and financial occupations | 28,774 | 11.0% | 425,852 | 13.0% |
| Military occupations | 1,491 | 0.6% | 34,261 | 1.0% |
| Office and administrative support occupations | 41,068 | 15.7% | 527,431 | 16.1% |
| Production occupations | 7,644 | 2.9% | 122,994 | 3.7% |
| Professional and related occupations | 41,460 | 15.9% | 597,784 | 18.2% |
| Sales and related occupations | 43,771 | 16.8% | 471,116 | 14.3% |
| Service occupations | 61,574 | 23.6% | 633,120 | 19.3% |
| Transportation and material moving occupations | 9,335 | 3.6% | 159,324 | 4.9% |

Source: EMSI Complete Employment - 1st Quarter 2010

Demographic Overview

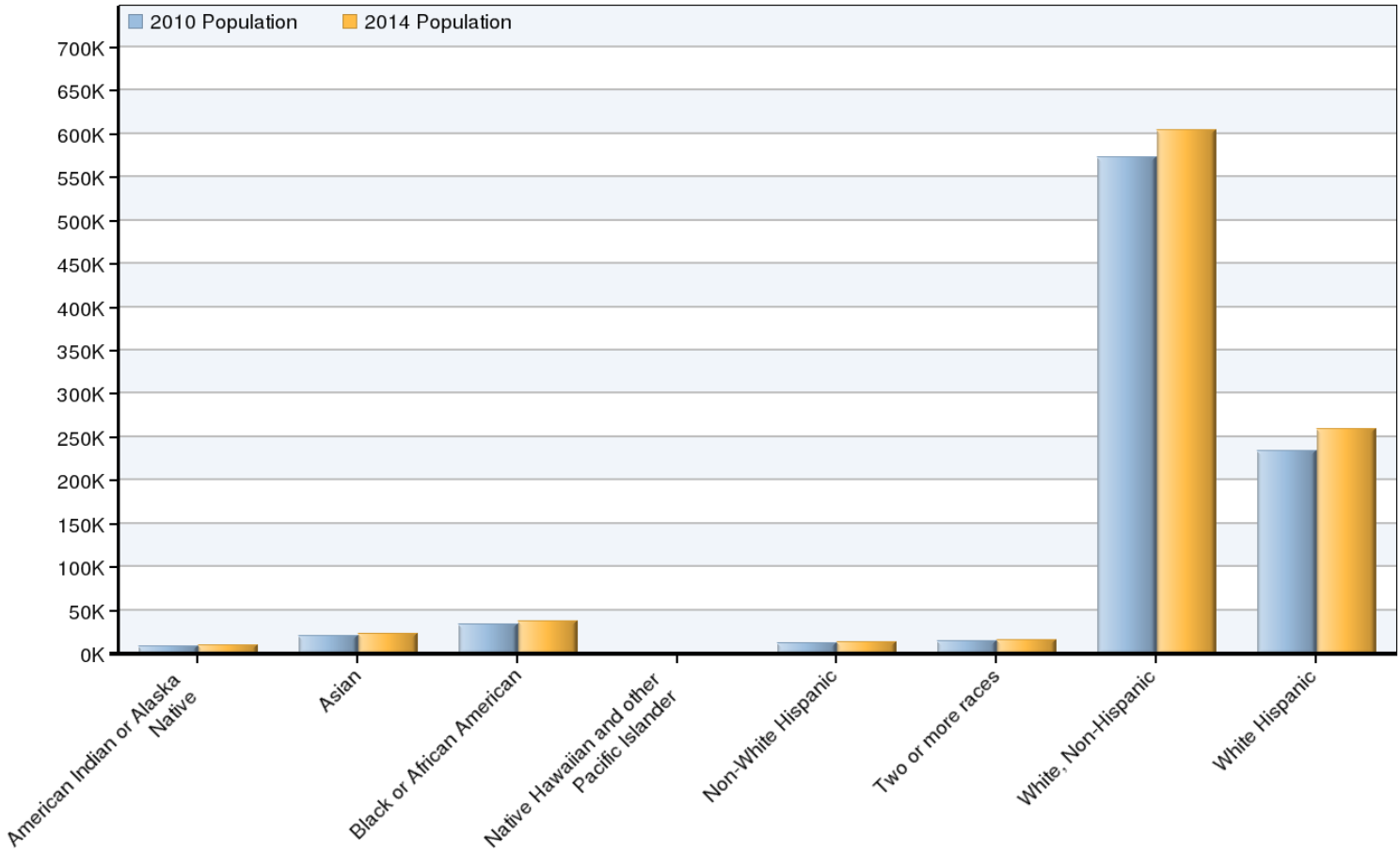
2010 Race/Ethnicity Breakdown



| Ethnicity | 2010 Population | % of Region |
|--|-----------------|-------------|
| American Indian or Alaska Native | 8,716 | 0.97% |
| Asian | 20,969 | 2.33% |
| Black or African American | 34,044 | 3.79% |
| Native Hawaiian and other Pacific Islander | 949 | 0.11% |
| Non-White Hispanic | 11,912 | 1.33% |
| Two or more races | 14,556 | 1.62% |
| White, Non-Hispanic | 573,002 | 63.77% |
| White Hispanic | 234,425 | 26.09% |

Source: EMSI Complete Employment - 1st Quarter 2010

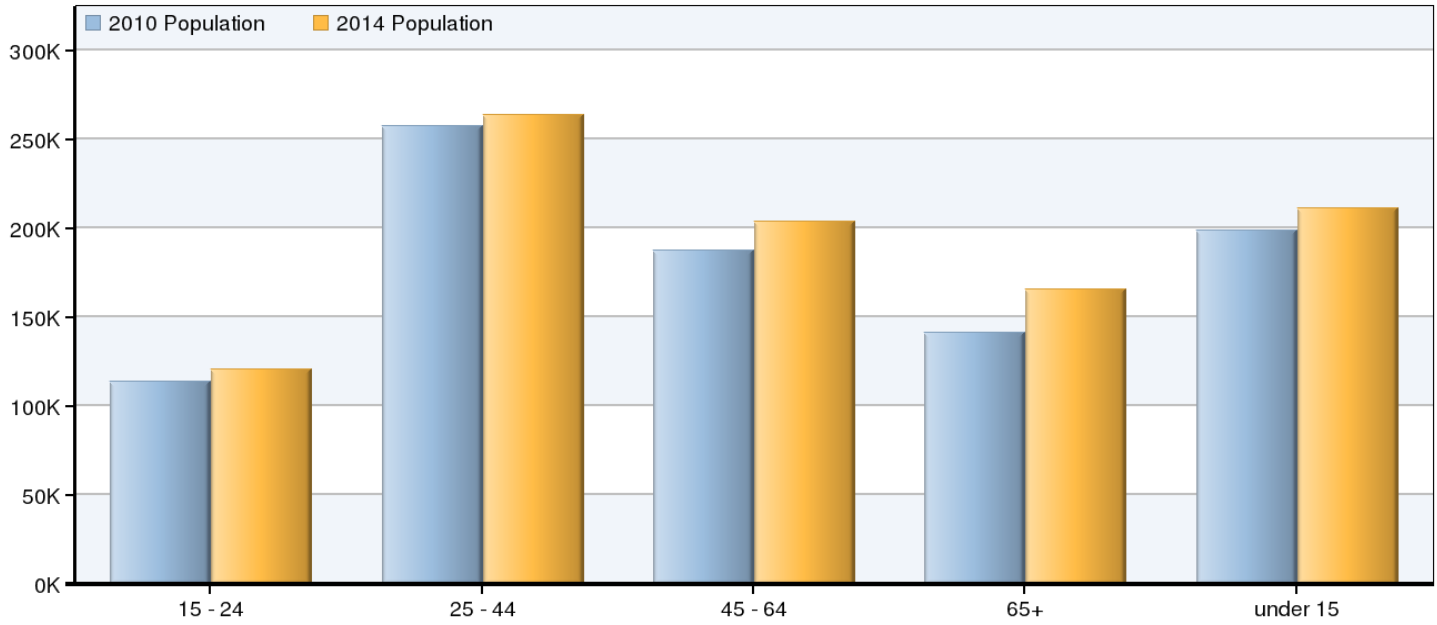
2010 - 2014 Race/Ethnicity Size and Growth



| Race/Ethnicity | 2010 Population | 2014 Population | Change | % Change |
|--|-----------------|-----------------|---------------|-----------|
| American Indian or Alaska Native | 8,716 | 9,408 | 692 | 8% |
| Asian | 20,969 | 23,430 | 2,461 | 12% |
| Black or African American | 34,044 | 37,564 | 3,520 | 10% |
| Native Hawaiian and other Pacific Islander | 949 | 1,047 | 98 | 10% |
| Non-White Hispanic | 11,912 | 13,356 | 1,444 | 12% |
| Two or more races | 14,556 | 16,223 | 1,667 | 11% |
| White, Non-Hispanic | 573,002 | 604,218 | 31,216 | 5% |
| White Hispanic | 234,425 | 258,880 | 24,455 | 10% |
| Total | 898,574 | 964,127 | 65,553 | 7% |

Source: EMSI Complete Employment - 1st Quarter 2010

2010 - 2014 Age Size and Growth



| Age | 2010 Population | 2014 Population | Change | % Change |
|--------------|-----------------|-----------------|---------------|-----------|
| 15 - 24 | 113,455 | 120,508 | 7,053 | 6% |
| 25 - 44 | 257,451 | 263,731 | 6,280 | 2% |
| 45 - 64 | 187,470 | 203,440 | 15,970 | 9% |
| 65+ | 141,276 | 165,334 | 24,058 | 17% |
| under 15 | 198,921 | 211,112 | 12,191 | 6% |
| Total | 898,574 | 964,127 | 65,553 | 7% |

Source: EMSI Complete Employment - 1st Quarter 2010

Data Sources and Calculations

Industry Data

In order to capture a complete picture of industry employment, EMSI basically combines covered employment data from Quarterly Census of Employment and Wages (QCEW) produced by the Department of Labor with total employment data in Regional Economic Information System (REIS) published by the Bureau of Economic Analysis (BEA), augmented with County Business Patterns (CBP) and Nonemployer Statistics (NES) published by the U.S. Census Bureau. Projections are based on the latest available EMSI industry data, 15-year past local trends in each industry, growth rates in statewide and (where available) sub-state area industry projections published by individual state agencies, and (in part) growth rates in national projections from the Bureau of Labor Statistics.

Occupation Data

Organizing regional employment information by occupation provides a workforce-oriented view of the regional economy. EMSI's occupation data are based on EMSI's industry data and regional staffing patterns taken from the Occupational Employment Statistics program (U.S. Bureau of Labor Statistics). Wage information is partially derived from the American Community Survey. The occupation-to-program (SOC-to-CIP) crosswalk is based on one from the U.S. Department of Education, with customizations by EMSI.

Demographic Data

The demographic data in this report is compiled from several sources using a specialized process. Sources include US Census Bureau annual estimates, birth and mortality rates from the US Health Department, and projected regional job growth.

State Data Sources

This report uses state data from the following agencies: Arizona Department of Commerce, Research Administration.